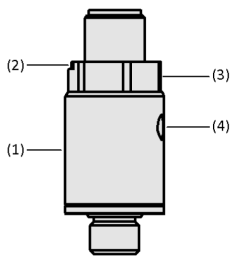


Vacuum Switches VSi-HD

Measuring range from -1 bar to 0 bar



Vacuum Switches VSi-HD



System design Vacuum Switches VSi-HD

Product highlights

- Increased process reliability of the overall system by reading out pressure and vacuum values
- Easy integration into the plant control system as well as input and output of relevant process data via IO-Link interface
- Reliable monitoring of, for example, leakage or parts control through digital and visual signal output
- Compact sensor enables flexible positioning in the plant
- Robust aluminum housing provides additional protection against mechanical stress, for example with cables without strain relief

Designation code Vacuum Switches VSi-HD

Suitability for industry specific applications

Applications

- Electronic vacuum switch VSi-HD with IO-Link interface for measuring and monitoring of vacuum in automation and handling systems
- Heavy-duty version for use in rugged environments (e.g. due to acceleration, dirt or vibrations)
- Installation directly on the suction cup, especially in decentralized vacuum systems
- Input and output of process parameters via the control

Design

- Robust aluminum housing (1) protects internal sensor unit from damage
- Integrated light guide (2) provides the user with an additional visual signal
- External hexagon (3) enables simple and fast mounting
- Pressure compensation diaphragm for protection class IP65 (in connected state) (4)

Vacuum Switches VSi-HD

Measuring range from -1 bar to 0 bar



1 – Abbreviated designation

Code	Type
VSi HD	VSi (IO-Link), Heavy Duty

2 – Measuring range

Code	Measuring range in bar
V	-1 to 0

3 – Connection electrical

Code	Connection
M12-4	Plug M12, 4-pole

The vacuum switch VSi-HD is supplied as a product ready to connect (without connection cable).

Available accessories: connection cable

Ordering data Vacuum Switches VSi-HD

Type	Part no.
VSi HD V M12-4	10.06.02.00760  

Ordering data Accessories Vacuum Switches VSi-HD

Accessories	Part no.
ASK B-M12-4 5000 K-4P	21.04.05.00263
ASK B-M12-4 5000 S-M12-4	21.04.05.00265
ASK B-M12-4 2000 S-M12-4	21.04.05.00087
BEF-WIN 21x22x60.5 1.5 VS	10.06.02.00061

Technical data Vacuum Switches VSi-HD

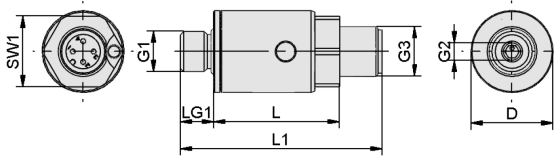
Type	Measured medium	Measuring range [bar]	Max. overpressure safety [bar]	Repeatability	Switching capacity max. [mA]	Hysteresis	Inputs/outputs
VSi HD V M12-4	Non-aggressive gases; dry, oil-free air	-1,0 ... 0,0 bar	8	± 3% of full-scale value	100	Adjustable	2 digital

Type	Indication	Electrical connection	Connection	Voltage	Protection type IP	Temperature influence	Operating temperature	Weight [g]
VSi HD V M12-4	LED	Male connect M12, 4 pol	G1/8"-M + M5-F	10-30V DC	IP 65 (with plug)	± 3% of full-scale value	0 ... 50 °C	22.1

Vacuum Switches VSi-HD

Measuring range from -1 bar to 0 bar

Design data Vacuum Switches VSi-HD



VSi-HD

Design data Vacuum Switches VSi-HD

Type	D [mm]	G1	G2	G3	L [mm]	L1 [mm]	LG1 [mm]	SW1 [mm]
VSi HD V M12-4	19.7	G1/8"-M	M5-F	M12x1-M	30.3	48.5	8	17.0