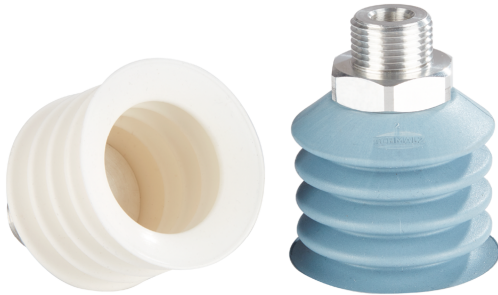
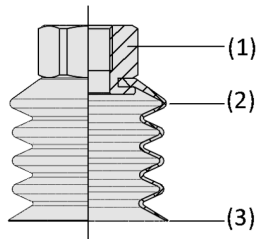


Bellows Suction Cups FSDC

Suction area (Ø) 40 mm



Bellows Suction Cups FSDC



System design Bellows Suction Cups FSDC



Bellows suction cups FSDC when handling baked goods

Suitability for industry specific applications

Applications

- Food compliant suction cup for industrial use in plants for handling bread and bakery products
- Handling of dough pieces in automated production
- Use in the handling of frozen bakery products

Design

- Suction cup connection nipple made of FDA compliant aluminium (1)
- Bellows suction cups with 4.5 folds (2) made of wear resistant SI-HD (FDA compliant) or metal detectable SI-MD (FDA compliant)
- Flexible sealing lip (3) in conjunction with optimized bellows structure

Product highlights

- Reduced machine maintenance times due to wear resistant and FDA compliant material SI-HD
- Reliable handling of food products by using the special material SI-MD, detectable by commercially available metal detectors
- Very good adaptation to uneven workpiece contours due to flexible sealing lip

Bellows Suction Cups FSDC

Suction area (Ø) 40 mm

Designation code Bellows Suction Cups FSDC

FSDC	-	40	-	SI-HD-65	-	G1/4-IG
1		2		3		4

1 – Abbreviated designation

Code	Version
FSDC	4.5 folds

2 – Suction area

Code	Diameter in mm
40	ø 40

3 – Material

Code	Material
SI-HD-65	Silicone
SI-MD-55	Silicone

4 – Connection

Code	Connection
G1/4-IG	G1/4-IG (IG = female (F))
G3/8-AG	G3/8-AG (AG = male (M))

Bellows suction cup FSDC (suction cup + connection nipple) is delivered unassembled. The product consists of:

- Suction cup of type FSDC - elastomer part, available in different diameters and materials
- Connection nipple of type SA-NIP - available with different threads

Ordering data Bellows Suction Cups FSDC

Type			Suction cup material with ShA: *	
			SI-HD-65	SI-MD-55
FSDC	40	G1/4"-F	10.01.06.05237	10.01.06.05239
FSDC	40	G3/8"-M	10.01.06.05238	10.01.06.05240

*Additional material specifications at beginning of the section "Vacuum Suction Cups"

Ordering data Spare parts Bellows Suction Cups FSDC

Type			Suction cup material with ShA: *	
			SI-HD-65	SI-MD-55
FSDC	40	N059	10.01.06.04598	10.01.06.05187

*Additional material specifications at beginning of the section "Vacuum Suction Cups"

Type			Spare parts		Part no.
FSDC	40	G1/4"-F	Suction cup connection nipple	SA-NIP N059 G3/8-AG	10.01.06.05231
FSDC	40	G3/8"-M	Suction cup connection nipple	SA-NIP N059 G3/8-AG	10.01.06.05231

Technical data Bellows Suction Cups FSDC

Type			Suction force (-600 mbar) [N]*	Pull-off force [N]	Material hardness [Shore A]	Volume [cm ³]	Hose diameter (recom.) d [mm]**
FSDC	40	SI-HD-65	35.9	39	65	30.6	12.0
FSDC	40	SI-MD-55	35.9	39	55	30.6	12.0

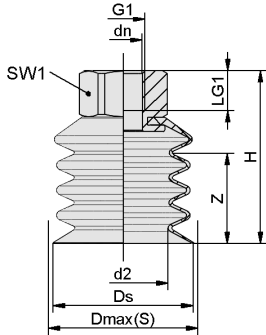
*The specified suction forces are theoretical values at a vacuum of -0.6 bar and with a smooth, dry workpiece surface - they do not include a safety factor

**The recommended hose diameter is based on a hose length of approx. 2 m

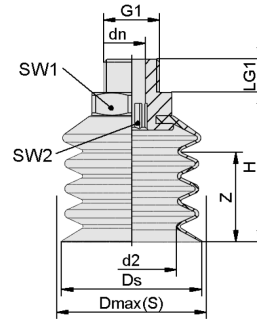
Bellows Suction Cups FSDC

Suction area (\emptyset) 40 mm

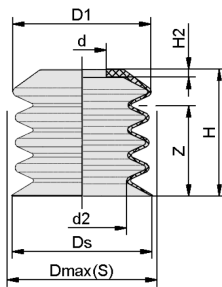
Design data Bellows Suction Cups FSDC



FSDC 40 G1/4-IG



FSDC 40 G3/8-AG



FSDC 40

Bellows Suction Cups FSDC

Suction area (Ø) 40 mm

Design data Bellows Suction Cups FSDC

Type	d2 [mm]	dn [mm]	Dmax(S) [mm]	Ds [mm]	G1	H [mm]	LG1 [mm]	SW1 [mm]	SW2 [mm]	Z (Stroke) [mm]
FSDC 40 SI- HD-65 G1/4-IG	26.9	11.4	45	42	G1/4"-F	52	12	24	-	27
FSDC 40 SI- HD-65 G3/8-AG	26.9	8.2	45	42	G3/8"-M	45	10	24	8	27
FSDC 40 SI- MD-55 G1/4-IG	26.9	11.4	45	42	G1/4"-F	52	12	24	-	27
FSDC 40 SI- MD-55 G3/8- AG	26.9	8.2	45	42	G3/8"-M	45	10	24	8	27

Type*	d [mm]	d2 [mm]	D1 [mm]	Dmax(S) [mm]**	Ds [mm]	H [mm]	H2 [mm]	Z (Stroke) [mm]	
FSDC	40	14.5	27	42	45.0	42.0	38.0	2.4	27.0

*Acceptable dimensional tolerances for rubber parts concerning to DIN ISO 3302-1 E3

**External dimension of the suction cup when it is pressed against the workpiece by the vacuum