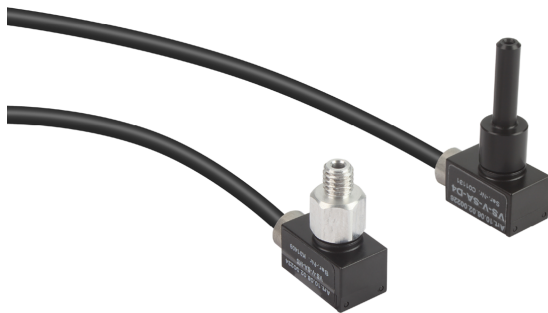


# Vacuum Sensors VS-V-SA

Measuring range from -1 bar to 0 bar



Vacuum Sensors VS-V-SA

## Suitability for Industry Specific Applications

### Applications

- Electronic vacuum sensor for measurement of vacuum values close to the suction cup
- Remote evaluation of the signals
- Processing of output signals for example a stored program controller
- Ideal for monitoring the vacuum curve within a handling process
- For use in all areas of automated handling

### Design

- Mini-sensor with housing and connection cable
- Available with either screw connector or plug connector
- Analog output signal (voltage output)

### Product Highlights

- Very compact, lightweight sensors for vacuum systems, optimal for high accelerations
- Highest measuring accuracy for precise output signals
- Flexible mounting with thread (M3 or M5) or plug-in tube (diameter 4 or 6 mm)

## Designation Code Vacuum Sensors VS-V-SA

VS 1	-	V 2	-	SA 3	-	M5-AG 4
---------	---	--------	---	---------	---	------------

### 1 – Abbreviated designation

Code	Version
VS	VS

### 2 – Measuring range

Code	Measuring range in bar
V	-1 to 0

### 3 – Principle of function

Code	Type
SA	Sensor analoge

### 4 – Vacuum connection

Code	Connection
STR4	STR4 plug-in tube
STR6	STR6 plug-in tube
M3-AG	M3-AG (AG = male (M))
M5-AG	M5-AG

Vacuum switch VS-V-SA is delivered as a ready-to-connect product.

## Vacuum Sensors VS-V-SA

Measuring range from -1 bar to 0 bar

### Ordering Data Vacuum Sensors VS-V-SA

Type	Part no.
VS-V-SA STR4	10.06.02.00226
VS-V-SA STR6	10.06.02.00227
VS-V-SA M3-AG	10.06.02.00225
VS-V-SA M5-AG	10.06.02.00224

### Technical Data Vacuum Sensors VS-V-SA

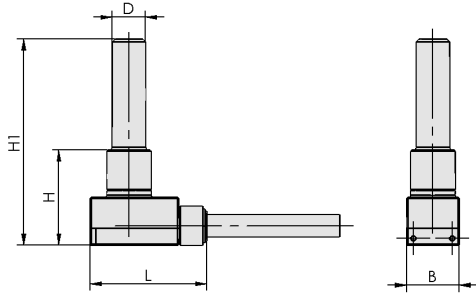
Type	Measured medium	Measuring range [bar]	Max. overpressure safety [bar]	Inputs/outputs	Repeatability	Electrical connection
VS-V-SA	Non-aggressive gases; dry, oil-free air	-1,00 ... 0,00 bar	5	-	± 1% of full-scale value	Cable

Type	Voltage	Protection type IP	Temperature influence	Operating temperature [°C]	Length of cable Lk [m]	Weight [g]
VS-V-SA	10-24V DC	IP 40	± 3% of full-scale value	0 ... 50 °C	3	5

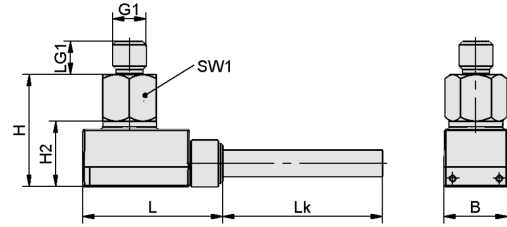
# Vacuum Sensors VS-V-SA

Measuring range from -1 bar to 0 bar

## Design Data Vacuum Sensors VS-V-SA



VS-V-SA-STR4, VS-V-SA-STR6



VS-V-SA-M3, VS-V-SA-M5

## Vacuum Sensors VS-V-SA

Measuring range from -1 bar to 0 bar

### Design Data Vacuum Sensors VS-V-SA

Type	B [mm]	D [mm]	G1	H [mm]	H1 [mm]	H2 [mm]	L [mm]	Lk [m]	LG1 [mm]	SW1 [mm]
VS-V-SA STR4	9.5	4	-	17.2	32.2	10	21	3	-	-
VS-V-SA STR6	9.5	6	-	17.2	37.2	10	21	3	-	-
VS-V-SA M3-AG	9.5	-	M3-M	16.9	-	10	21	3	3	8
VS-V-SA M5-AG	9.5	-	M5-M	16.9	-	10	21	3	5	8