

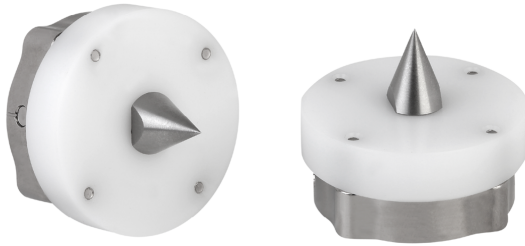
Tool Center Point VEE-TCP



Suitability for Industry Specific Applications

Applications

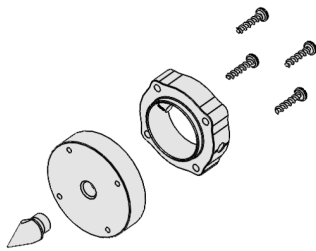
- Determining the tool position of an industrial robot with a tool center point that can be directly flange-mounted



Tool Center Point VEE-TCP

Design

- Tool center point with standard interface to flange modules VEE-QCM or vacuum modules VEE-QCMV



System Design Tool Center Point VEE-TCP

Product Highlights

- Simple and fast tool position determination with the aid of the easily recognizable centering point
- Bayonet connection enables fast, tool-free change of the center point

Multimedia product presentation

Medium

Product video

Link

<https://vimeo.com/147437579>
<https://vimeo.com/146367400>

