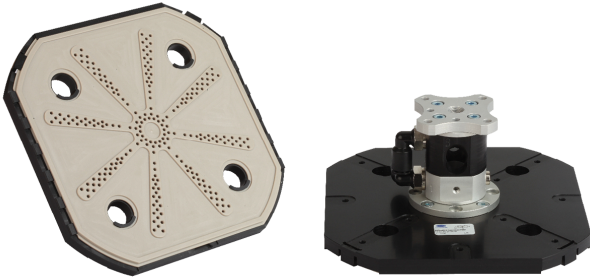


Wafer Grippers SWGm Wet

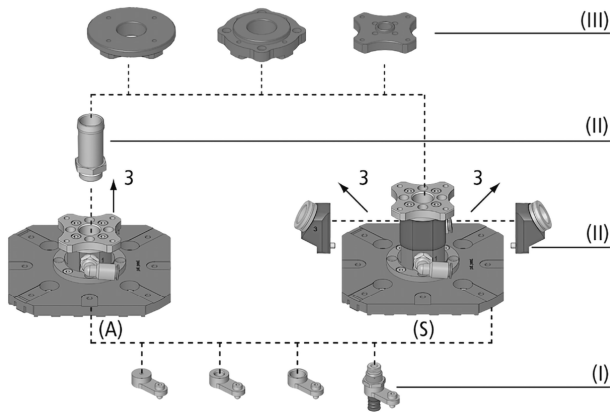
Suitability for Industry Specific Applications

Applications

- Wafer gripper for extreme fast, reliable, precise and gentle handling of wet wafers in wet bench applications
- Handling of wafers after etching and cleaning processes
- Loading and unloading of conveyor belts
- Fully or partially automated production of PV cells with maximum process stability, production line uptime, cell efficiency and line output



Wafer Grippers SWGm Wet



System Design Wafer Grippers SWGm Wet

Design

- Base model version with discharging exhaust air (3) in axial (A) or lateral (S) direction
- Suction area geometries available in common cell sizes 125 mm and 156 mm (5" and 6")
- Optional component (II) for controlled discharging of exhaust air
- Modular design with accessories for the mounting of sensors and modules for suction and damping (I) and a selection of flange modules (III)
- Minimal overall height through reduced-weight plastic design
- Replaceable contact surfaces

Product Highlights

- Specially positioned and dimensioned suction points enable safe handling of wet wafers
- Extremely fast and accurate handling thanks to low height and weight
- High suction capacity allows safe gripping even with partial occupancy or leakage e.g. with perforated wafers
- Controlled discharge of sucked air (optional) prevents contamination of the process area
- Quick release function enables precise wafer positioning

Ordering Data Wafer Grippers SWGm Wet

Type	Part no.
SWGm-6S W 146x146x65 PEEK	10.01.30.00191
SWGm-5S W 115x115x65 PEEK	10.01.30.00193