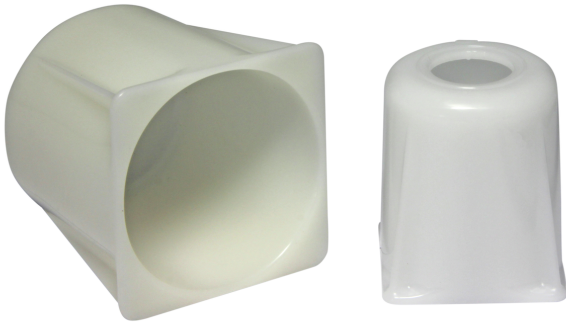


# Stabilization Elements SPSE



Stabilization Elements SPSE

## Design

- Stabilization element SPSE made of POM (color: white)
- Suitable for two suction cup sizes: SPB4-30 (item no. 10.01.06.02589) and SPB4-40 (item no. 10.01.06.02590)
- For connection elements with G3/8"-M: SC 080 G3/8-M (item no. 10.01.06.02593) and SC 090 G3/8-M (item no. 10.01.06.02791) (Connection elements are equipped with hexagonal socket for suction cup-side installation)
- Suction cup with connection element is easy to install and remove

## Suitability for Industry Specific Applications

### Applications

- Stabilization element SPSE for use in combination with bellows suction cups SPB4
- Increased absorption of lateral forces when handling bags and film packaging
- Stabilization element can be used with the vacuum end effector VEE
- Use in quick packaging processes, particularly together with parallel kinematic robots

### Product Highlights

- Enables process-safe gripping of pouches with dynamic handling
- Safe and precise placement of the workpiece thanks to large support surface
- Prevents the workpiece from swinging, even during strong acceleration
- Modular design allows stand-alone use or with vacuum end effector VEE