

Pressure Reduction Valve DM

Working range from 0.5 bar to 10.0 bar



Suitability for Industry Specific Applications



Applications

- Pressure reduction valve for manual control of compressed air in systems
- Targeted supply of compressed air through precise pressure control, for pneumatic vacuum generators, etc.
- For use in testing and measuring applications, such as testing for leaks

Pressure Reduction Valve DM

Design

- Pressure reduction valve with robust aluminum housing
- Precise pressure adjustment with lockable control handle
- Manometer and bracket included with delivery

Product Highlights

- Mechanically adjustable pressure reducer enables very high repeatability
- Maintains precisely the set pressure value
- Easy and flexible to install, as it is independent of inlet pressure and reversible

Designation Code Pressure Reduction Valve DM

DM	-	0.5...10	-	G1/2-IG
1		2		3

1 - Abbreviated designation

Code	Version
DM	DM

2 - Working area

Code	Working area in bar
0.5...10	0.5 to 10

3 - Connection

Code	Connection
G1/2-IG	G1/2-IG (IG = female (F))

Pressure reduction valve DM is delivered as a ready-to-connect product, including mounting bracket.

Ordering Data Pressure Reduction Valve DM

Type	Part no.
DM 0.5...10 G1/2-IG	10.07.11.00025

Technical Data Pressure Reduction Valve DM

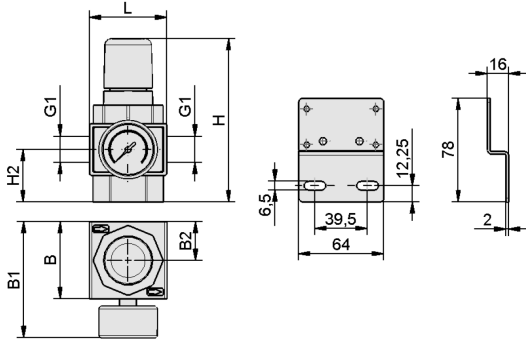
Type	Work area [bar]	Flow rate max. [l/min]*	Flow rate max. [m ³ /h]**	Operating temperature [°C]	Weight [kg]	Durchfluss max. Druck [l/min]
DM 0.5...10 G1/2-IG	0,5 ... 10,0	-	78	-10 ... 60 °C	0,74	1,300

*Input pressure 10 bar and output pressure 6.3 bar
 **Input pressure 10 bar and output pressure 6.3 bar

Pressure Reduction Valve DM

Working range from 0.5 bar to 10.0 bar

Design Data Pressure Reduction Valve DM



DM

Design Data Pressure Reduction Valve DM

Type	B1 [mm]	B2 [mm]	G1	H [mm]	H2 [mm]
DM 0.5...10 G1/2-IG	96	32	G1/2"-F	136	44