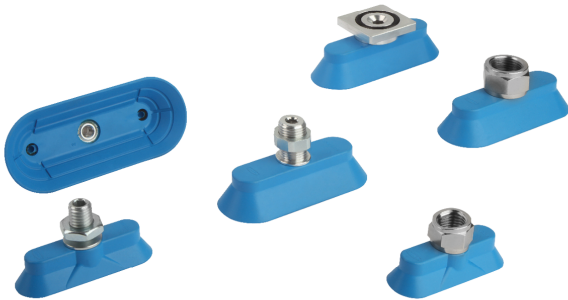
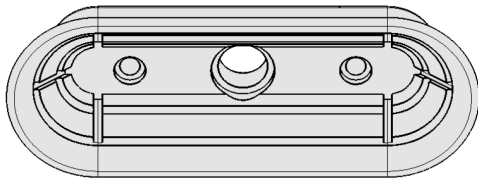


## Bell-Shaped Suction Cups SAOG (Oval)

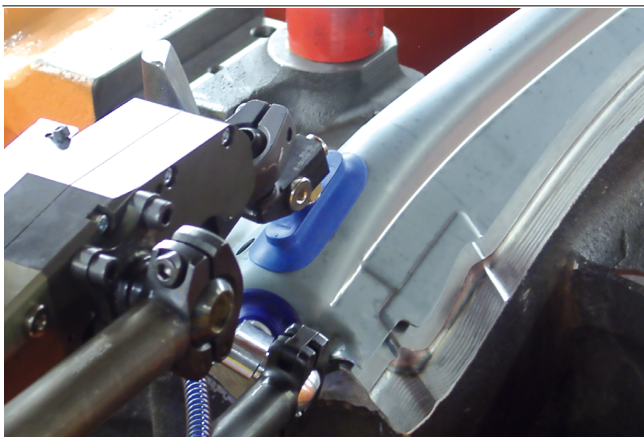
Suction area (LxW) from 60 x 20 mm to 95 x 40 mm



Bell-Shaped Suction Cups SAOG (Oval)



System design Bell-Shaped Suction Cups SAOG (Oval)



Bell-shaped suction cups SAOG being used for handling very curved sheet metal parts

### Suitability for industry specific applications

#### Application

- Oval bell-shaped suction cup for handling of elongated, oiled workpieces with extremely small curved radii
- Handling of sheet metal in very dynamic applications (shorter cycle times)
- Handling of thin steel sheets and aluminum sheets without deformation due to inner support
- Suitable for use in, for example, feeder systems for press lines in the automotive industry
- Displacement-free handling of oiled sheets due to special slot on the underside of the suction cup e.g. for precise positioning in punching machines etc.

#### Design

- Oval bell-shaped suction cup with single sealing lip, special slot and inner support
- Suction cups made of NBR material, hardness 45 Shore

#### Product highlights

- Oval suction cup in bell-shape adapts optimally to narrow, strongly curved workpieces
- Adaptation to workpieces with small radius of curvature thanks to the material NBR with 45 Shore
- Numerous mounting elements allow the connection to all common load beams and feeder systems

## Bell-Shaped Suction Cups SAOG (Oval)

Suction area (LxW) from 60 x 20 mm to 95 x 40 mm

### ✓ Designation code Bell-Shaped Suction Cups SAOG (Oval)

<b>SAOG</b>	–	<b>60x20</b>	–	<b>NBR-45</b>	–	<b>RA</b>
<b>1</b>		<b>2</b>		<b>3</b>		<b>4</b>

#### 1 – Abbreviated designation

Code	Version
SAOG	Flat, oval

#### 2 – Suction area

Code	LxW in mm
60x20...95x40	60x20 to 95x40

#### 3 – Material

Code	Material
NBR-45	Nitrile caoutchuc

#### 4 – Connection

Code	Connection
G1/4-AG	G1/4-AG (AG = male (M))
G1/4-IG	G1/4-IG (IG = female (F))
G3/8-AG	G3/8-AG
G3/8-IG	G3/8-IG
M10-AG	M10-AG
M14x1.5-AG	M14x1.5-AG
RA	Rectangular adapter

Suction cup SAOG, available in various diameters, is delivered with connection nipple vulcanized to elastomer part.