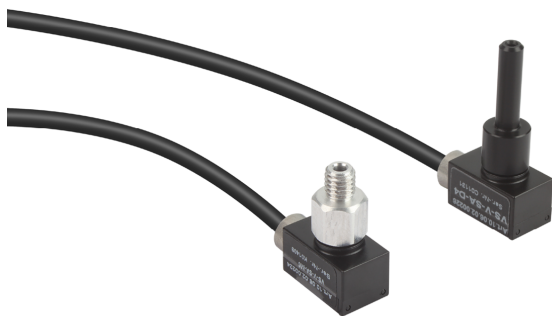


Vacuum Switches VS-V-SD

Measuring range from -1 bar to 0 bar



Vacuum Switches VS-V-SD

Suitability for Industry Specific Applications

Applications

- Electronic vacuum switch for measurement of vacuum values close to the suction cup
- Remote evaluation of the signals
- Processing of output signals for example a stored program controller
- Ideal for outputting part presence signals
- For use in all areas of automated handling

Design

- Mini switch with housing and firmly attached connection cable (3 m)
- Available with either screw connector or plug connector
- Digital output signal (permanently set to -600 mbar)

Product Highlights

- Very compact, lightweight switches for vacuum systems, optimal for high acceleration
- Highest measuring accuracy for precise output signals
- Flexible mounting with thread (M3 or M5) or plug-in tube (diameter 4 or 6 mm)

Designation Code Vacuum Switches VS-V-SD

VS	-	V	-	SD	-	60	-	STR6
1		2		3		4		5

1 - Abbreviated designation

Code	Version
VS	VS

2 - Measuring range

Code	Measuring range in bar
V	-1 to 0

3 - Principle of function

Code	Type
SD	Sensor digital

4 - Switching point

Code	Switching point in mbar
60	Switching point -600

5 - Vacuum connection

Code	Connection
STR4	STR4 plug-in tube
STR6	STR6 plug-in tube
M3-AG	M3-AG (AG = male (M))
M5-AG	M5-AG

Vacuum switch VS-V-SD is delivered as a ready-to-connect product.

Vacuum Switches VS-V-SD

Measuring range from -1 bar to 0 bar

Ordering Data Vacuum Switches VS-V-SD

Type	Part no.
VS-V-SD 60 STR4	10.06.02.00259
VS-V-SD 60 STR6	10.06.02.00260
VS-V-SD 60 M3-AG	10.06.02.00258
VS-V-SD 60 M5-AG	10.06.02.00257

Technical Data Vacuum Switches VS-V-SD

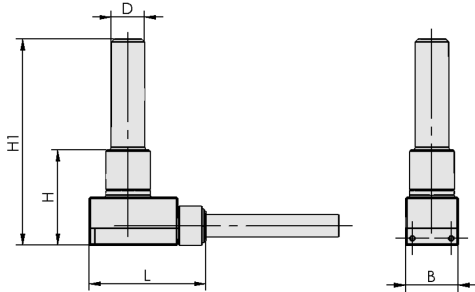
Type	Measured medium	Measuring range [bar]	Max. overpressure safety [bar]	Repeatability	Hysteresis	Inputs/outputs	Switching capacity max. [mA]	Switching point
VS-V-SD 60 STR4	Non-aggressive gases; dry, oil-free air	-1,0 ... 0,0 bar	5	± 1% of full-scale value	Fixed: approx. 20 mbar	1 digital	60	- 600
VS-V-SD 60 STR6	Non-aggressive gases; dry, oil-free air	-1,0 ... 0,0 bar	5	± 1% of full-scale value	Fixed: approx. 20 mbar	1 digital	60	- 600
VS-V-SD 60 M3-AG	Non-aggressive gases; dry, oil-free air	-1,0 ... 0,0 bar	5	± 1% of full-scale value	Fixed: approx. 20 mbar	1 digital	60	- 600
VS-V-SD 60 M5-AG	Non-aggressive gases; dry, oil-free air	-1,0 ... 0,0 bar	5	± 1% of full-scale value	Fixed: approx. 20 mbar	1 digital	60	- 600

Type	Indication	Electrical connection	Voltage	Protection type IP	Temperature influence	Operating temperature [°C]	Length of cable Lk [m]	Weight [g]
VS-V-SD 60 STR4	LED	Cable	10-24V DC	IP 40	± 3% of full-scale value	0 ... 50 °C	3	5
VS-V-SD 60 STR6	LED	Cable	10-24V DC	IP 40	± 3% of full-scale value	0 ... 50 °C	3	5
VS-V-SD 60 M3-AG	LED	Cable	10-24V DC	IP 40	± 3% of full-scale value	0 ... 50 °C	3	5
VS-V-SD 60 M5-AG	LED	Cable	10-24V DC	IP 40	± 3% of full-scale value	0 ... 50 °C	3	5

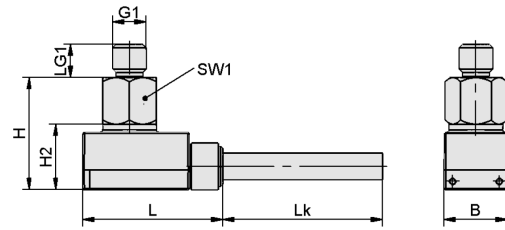
Vacuum Switches VS-V-SD

Measuring range from -1 bar to 0 bar

Design Data Vacuum Switches VS-V-SD



VS-V-SD-STR4, VS-V-SD-STR6



VS-V-SD-M3, VS-V-SD-M5

Vacuum Switches VS-V-SD

Measuring range from -1 bar to 0 bar

Design Data Vacuum Switches VS-V-SD

Type	B [mm]	D [mm]	G1	H [mm]	H1 [mm]	H2 [mm]	L [mm]	LG1 [mm]	Lk [m]	SW1 [mm]
VS-V-SD 60 STR4	9.5	4	-	17.2	32.2	10	21	-	3	-
VS-V-SD 60 STR6	9.5	6	-	17.2	37.2	10	21	-	3	-
VS-V-SD 60 M3-AG	9.5	-	M3-M	16.9	-	10	21	3	3	8
VS-V-SD 60 M5-AG	9.5	-	M5-M	16.9	-	10	21	5	3	8