

Check Valves SVK, SVKG, SVV

Connection thread from M5 to G1/2"



Check Valves SVK, SVKG, SVV

Design

- Ball seat valve
- Ball in brass seat, installed in a space saving manner in an aluminum housing
- On the type SVV, the flow rate can be adjusted continuously with an adjusting screw
- Suitable for installation in any orientation

Designation Code Check Valves SVK, SVKG, SVV

Suitability for Industry Specific Applications

Applications

- Valve for applications where some of the suction cups may not be in contact with the workpiece
- Deactivation of unused suction cups, the system vacuum is maintained
- Handling of workpieces of different shapes and sizes with the same gripping system

Product Highlights

- Ball seat valve closes the line when the suction cups are not occupied, thus maintaining the system vacuum
- Low leakage can be compensated by bypass
- Wide range of nominal sizes, also for high nominal flow
- With male thread at the top (type SVK) or bottom (type SVKG) suitable for all common suction cups and plates

Check Valves SVK, SVKG, SVV

Connection thread from M5 to G1/2"



1 – Abbreviated designation

Code	Version
SVK	Male thread at the top
SVKG	Male thread at the bottom
SVV	Adjusting screw

2 – Connection

Code	Connection
M5-AG	M5-AG (AG = male (M))
M5-IG	M5-IG (IG = female (F))
G1/8-AG	G1/8-AG
G1/8-IG	G1/8-IG
G1/4-AG	G1/4-AG
G1/4-IG	G1/4-IG
G3/8-AG	G3/8-AG
G3/8-IG	G3/8-IG
G1/2-AG	G1/2-AG
G1/2-IG	G1/2-IG

Check valves SVK, SVKG, SVV are delivered as a ready-to-connect product.

Ordering Data Check Valves SVK, SVKG, SVV

Type	Part no.
SVK M5-IG	10.05.03.00033
SVK G1/8-IG	10.05.03.00034
SVK G1/4-IG	10.05.03.00035
SVK G3/8-IG	10.05.03.00036
SVK G1/2-IG	10.05.03.00037
SVKG M5-AG	10.05.03.00166
SVKG G1/8-AG	10.05.03.00128
SVKG G1/4-AG	10.05.03.00131
SVKG G3/8-AG	10.05.03.00135
SVKG G1/2-AG	10.05.03.00133
SVV G1/4-IG	10.05.03.00003

Check Valves SVK, SVKG, SVV

Connection thread from M5 to G1/2"

Technical Data Check Valves SVK, SVKG, SVV

Type	Evacuation rate for pu = -0.3 bar [l/min]	Evacuation rate for pu = -0.3 bar [m³/h]	Evacuation rate for pu = -0.6 bar [l/min]	Evacuation rate for pu = -0.6 bar [m³/h]	Flow rate max. [l/min]*	Flow rate max. [m³/h]**	Flow rate max. pressure [l/min]	Weight [g]
SVK M5-IG	1.2	0.08	1.3	0.08	-	4.8	80	2.2
SVK G1/8-IG	2.3	0.15	2.5	0.15	-	18.6	310	11.2
SVK G1/4-IG	2.9	0.17	3.4	0.20	-	20.4	340	17.5
SVK G3/8-IG	7.3	0.44	8.0	0.48	-	35.4	590	30.3
SVK G1/2-IG	8.1	0.49	9.0	0.54	-	47.4	790	47.4
SVKG M5-AG	1.2	0.08	1.3	0.08	80	4.8	-	2.2
SVKG G1/8-AG	2.3	0.15	2.5	0.15	310	18.6	-	11.2
SVKG G1/4-AG	2.9	0.17	3.4	0.21	340	20.4	-	17.5
SVKG G3/8-AG	7.3	0.44	8.0	0.48	590	35.4	-	30.3
SVKG G1/2-AG	8.1	0.49	9.0	0.54	790	47.4	-	47.4
SVV G1/4-IG	22.6	1.36	28.6	1.72	400	24.0	-	24.7

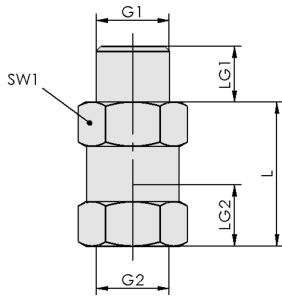
*Blow off pressure 5 bar

**Blow off pressure 5 bar

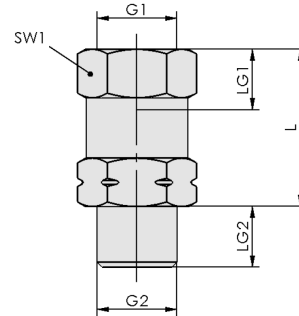
Check Valves SVK, SVKG, SVV

Connection thread from M5 to G1/2"

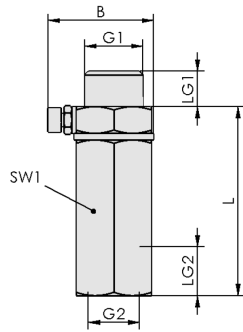
Design Data Check Valves SVK, SVKG, SVV



SVK



SVKG



SVV

Check Valves SVK, SVKG, SVV

Connection thread from M5 to G1/2"

Design Data Check Valves SVK, SVKG, SVV

Type	B [mm]	G1	G2	L [mm]	LG1 [mm]	LG2 [mm]	SW1 [mm]
SVK M5-IG	-	M5-M	M5-F	15.5	4.5	4.5	8
SVK G1/8-IG	-	G1/8"-M	G1/8"-F	26.0	8.0	8.5	14
SVK G1/4-IG	-	G1/4"-M	G1/4"-F	26.0	10.0	11.0	17
SVK G3/8-IG	-	G3/8"-M	G3/8"-F	29.0	10.0	12.0	22
SVK G1/2-IG	-	G1/2"-M	G1/2"-F	29.0	12.0	14.0	27
SVKG M5-AG	-	M5-F	M5-M	20.0	4.5	5.0	8
SVKG G1/8-AG	-	G1/8"-F	G1/8"-M	26.0	8.5	8.0	14
SVKG G1/4-AG	-	G1/4"-F	G1/4"-M	26.0	11.0	10.0	17
SVKG G3/8-AG	-	G3/8"-F	G3/8"-M	29.0	12.0	10.0	22
SVKG G1/2-AG	-	G1/2"-F	G1/2"-M	29.0	14.0	12.0	27
SVV G1/4-IG	23.9	G1/4"-M	G1/4"-F	42.5	8.0	11.0	17