

Non-Return Valves RSV

Nominal diameter from 6 mm to 54 mm



Suitability for Industry Specific Applications

Applications

- Non-return valve for maintaining the vacuum in the case of a power failure or a failure of the vacuum generator
- Can also be used with energy saving systems when handling non-porous materials
- May be installed in any orientation

Non-Return Valves RSV

Design

- Spring loaded seat valve
- Brass body (RSV 6, which is made of aluminum)
- Seat made of synthetic rubber, gasket made of nylon
- Stainless steel spring

Product Highlights

- Seat valve closes vacuum line while maintaining the system vacuum, e.g. in case of power failure
- Wide range of nominal sizes allows optimum adaptation to the nominal flow
- Minimum size allows use in the tightest of spaces

Designation Code Non-Return Valves RSV

RSV	-	6	-	G1/4-IG
1		2		3

1 – Abbreviated designation

Code	Version
RSV	RSV

2 – Nozzle size

Code	Nozzle size in mm
6...54	6 to 54

3 – Connection

Code	Connection
G1/4-IG	G1/4-IG (IG = female (F))
G3/8-IG	G3/8-IG
G1/2-IG	G1/2-IG
G3/4-IG	G3/4-IG
G1-IG	G1-IG
G1-1/4-IG	G1-1/4-IG
G1-1/2-IG	G1-1/2-IG
G2-IG	G2-IG

Non-return valve RSV is delivered as a ready-to-connect product.

Non-Return Valves RSV

Nominal diameter from 6 mm to 54 mm

Ordering Data Non-Return Valves RSV

Type	Part no.
RSV 6 G1/4-IG	10.05.05.00116
RSV 14 G3/8-IG MS	10.05.05.00002
RSV 18 G1/2-IG MS	10.05.05.00003
RSV 20 G3/4-IG MS	10.05.05.00004
RSV 28 G1-IG MS	10.05.05.00005
RSV 36 G1-1/4-IG MS	10.05.05.00006
RSV 42 G1-1/2-IG MS	10.05.05.00007
RSV 54 G2-IG MS	10.05.05.00008

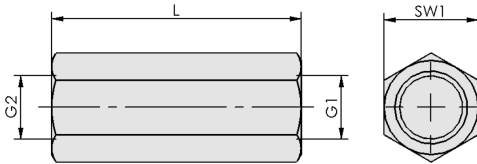
Technical Data Non-Return Valves RSV

Type	Nominal size [mm]	Nominal flow rate [m³/h]	Nominal flow rate [l/min]	Opening pressure [mbar]	Operating temperature [°C]	Weight [kg]
RSV 6 G1/4-IG	6	5	84	200	-10 ... 70 °C	0.04
RSV 14 G3/8-IG MS	14	20	334	20	-20 ... 100 °C	0.18
RSV 18 G1/2-IG MS	18	26	434	20	-20 ... 100 °C	0.19
RSV 20 G3/4-IG MS	20	45	750	20	-20 ... 100 °C	0.27
RSV 28 G1-IG MS	28	75	1,250	20	-20 ... 100 °C	0.42
RSV 36 G1-1/4-IG MS	36	125	2,083	20	-20 ... 100 °C	0.74
RSV 42 G1-1/2-IG MS	42	200	3,332	20	-20 ... 100 °C	0.98
RSV 54 G2-IG MS	54	350	5,831	20	-20 ... 100 °C	1.11

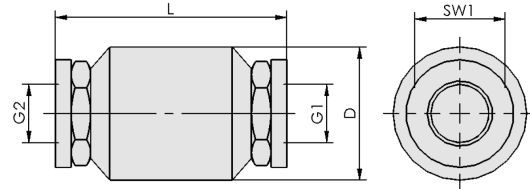
Non-Return Valves RSV

Nominal diameter from 6 mm to 54 mm

Design Data Non-Return Valves RSV



RSV 6



RSV 14 - 54

Non-Return Valves RSV

Nominal diameter from 6 mm to 54 mm

Design Data Non-Return Valves RSV

Type	D [mm]	G1	G2	L [mm]	SW1 [mm]
RSV 6 G1/4-IG	-	G1/4"-F	G1/4"-F	43	16
RSV 14 G3/8-IG MS	35	G3/8"-F	G3/8"-F	55	23
RSV 18 G1/2-IG MS	35	G1/2"-F	G1/2"-F	59	27
RSV 20 G3/4-IG MS	42	G3/4"-F	G3/4"-F	65	33
RSV 28 G1-IG MS	48	G1"-F	G1"-F	75	40
RSV 36 G1-1/4-IG MS	63	G1-1/4"-F	G1-1/4"-F	88	50
RSV 42 G1-1/2-IG MS	71	G1-1/2"-F	G1-1/2"-F	96	50
RSV 54 G2-IG MS	87	G2"-F	G2"-F	100	70