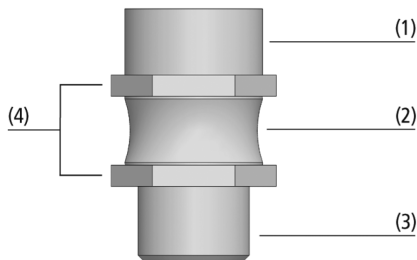


Flexolink FLK

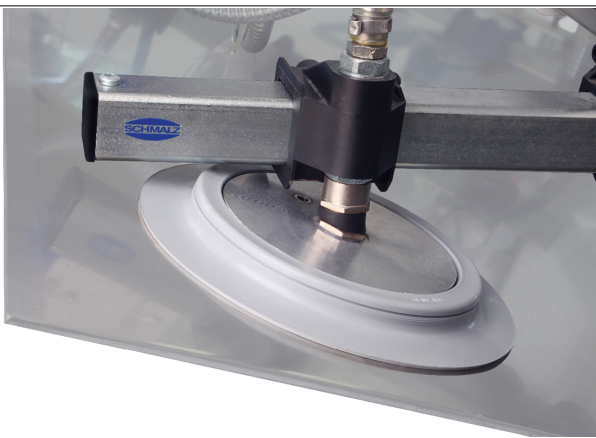
Connection thread G1/4" and G1/2"



Flexolink FLK



System design Flexolink FLK



Flexolink FLK for adaptation to sloping metal sheets

Suitability for industry specific applications

Application

- Flexolink for handling of workpieces with sloping surfaces with the aid of large suction cups or suction plates
- Handling of large sheets of materials such as wood or sheet metal, which may sag when lifted; Flexolink prevents the sheet from being pulled off due to one-sided forces
- Can be used together with spring plungers to compensate for differing workpiece heights and uneven surfaces
- Automatic resetting

Design

- Flexible mounting made of high-quality steel with a rubber buffer (vulcanized into position) as a joint (2)
- Maximum deflection angle limited by a screw-in stop
- Force is transferred via a shaped metal connection within the joint
- Flats on upper and lower halves for damage free installation (4)
- Connection thread for top connection (1) and (3) in various sizes
- Max. deflection: 12°

Product highlights

- All-round articulated mounting of suction cups and suction plates ideal for inclined workpiece surfaces
- Automatic return to the neutral starting position by means of rubber-metal joint
- Low swivel point of the suction cup minimizes wear when touching down on sloping surfaces
- Vacuum-tight, heavy-duty design with integrated protection against damage

Flexolink FLK

Connection thread G1/4" and G1/2"

Designation code Flexolink FLK

FLK	–	G1/2-IG	–	G1/2-AG	–	V
1		2		3		4

1 – Abbreviated designation

Code	Version
FLK	FLK

4 – Product addition

Code	Type
V	Special reinforced Flexolink

2 – Connection 1

Code	Connection
G1/4-AG	G1/4-AG (AG = male (M))
G1/4-IG	G1/4-IG (IG = female (F))
G1/2-AG	G1/2-AG
G1/2-IG	G1/2-IG

3 – Connection 2

Code	Connection
M10x1.25-AG	M10x1.25-AG (AG = male (M))
G1/4-AG	G1/4-AG
G1/2-AG	G1/2-AG

Jointed mounting Flexolink FLK is delivered as a ready-to-connect product.

Ordering data Flexolink FLK

Type*	Part no.
FLK G1/4-AG G1/4-AG	10.01.03.00152
FLK G1/4-IG M10x1.25-AG	10.01.03.00206
FLK G1/4-IG G1/4-AG	10.01.03.00178
FLK G1/2-AG G1/2-AG	10.01.03.00153
FLK G1/2-IG G1/2-AG	10.01.03.00175
FLK G1/2-IG G1/2-AG V	10.01.03.00207

*V = Special reinforced Flexolink for use with suction plates SPU 300 and SPU 400

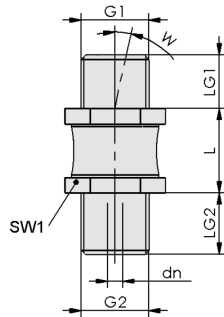
Technical data Flexolink FLK

Type	Vertical load [N]	Bending moment [Nm]	Weight [g]
FLK G1/4-AG G1/4-AG	750	10	30
FLK G1/4-IG M10x1.25-AG	500	8	26
FLK G1/4-IG G1/4-AG	750	10	30
FLK G1/2-AG G1/2-AG	3,000	65	100
FLK G1/2-IG G1/2-AG	3,000	50	100
FLK G1/2-IG G1/2-AG V	4,500	65	190

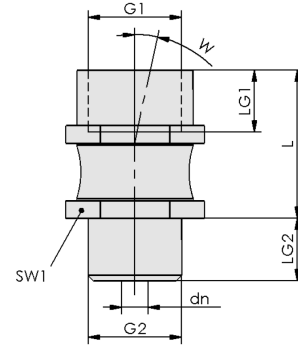
Flexolink FLK

Connection thread G1/4" and G1/2"

Design data Flexolink FLK



FLK AG-AG



FLK IG-AG

Flexolink FLK

Connection thread G1/4" and G1/2"

Design data Flexolink FLK

Type	dn [mm]	G1	G2	L [mm]	LG1 [mm]	LG2 [mm]	SW1 [mm]	W [mm]
FLK G1/4-AG G1/4-AG	3.0	G1/4"-M	G1/4"-M	16.5	10.5	12	17	12
FLK G1/4-IG M10x1.25-AG	2.8	G1/4"-F	M10x1.25-M	32.0	10.5	8	17	12
FLK G1/4-IG G1/4-AG	3.0	G1/4"-F	G1/4"-M	27.0	12.0	12	17	12
FLK G1/2-AG G1/2-AG	5.5	G1/2"-M	G1/2"-M	21.0	14.0	14	27	12
FLK G1/2-IG G1/2-AG	6.0	G1/2"-F	G1/2"-M	33.5	14.0	14	27	12
FLK G1/2-IG G1/2-AG V	6.0	G1/2"-F	G1/2"-M	53.0	14.0	14	36	8