

coDrive™ Control Unit  
mGrip CODRIVE CONTROL UNIT

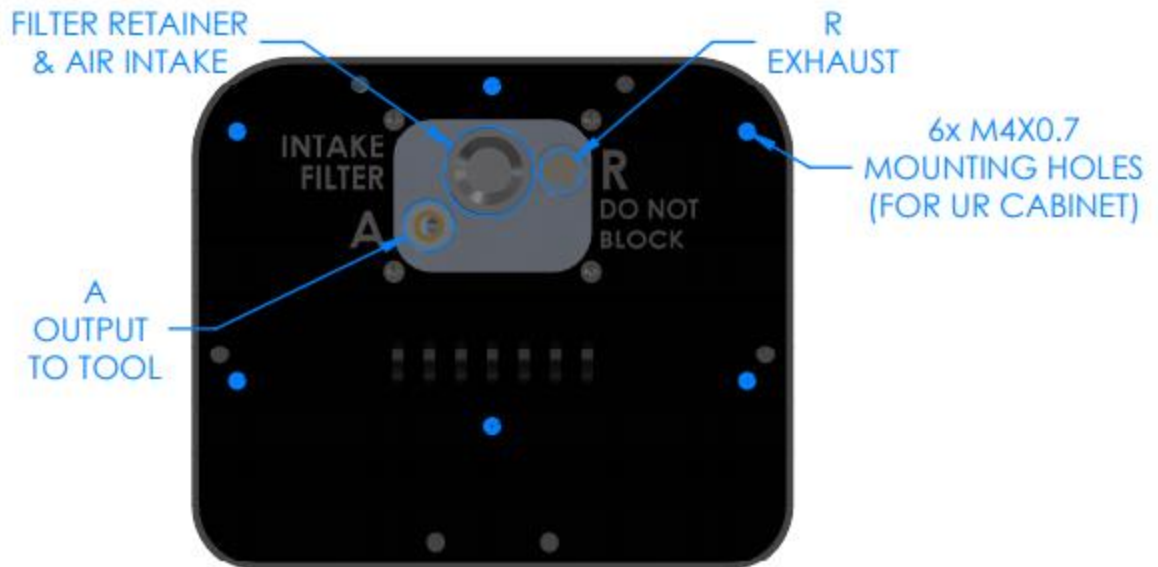
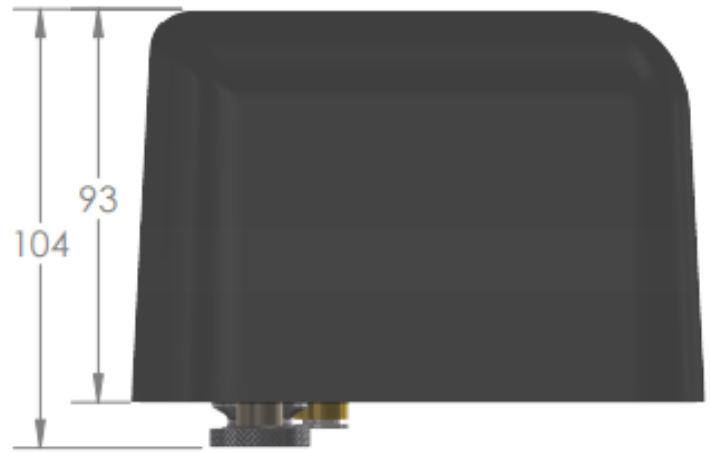
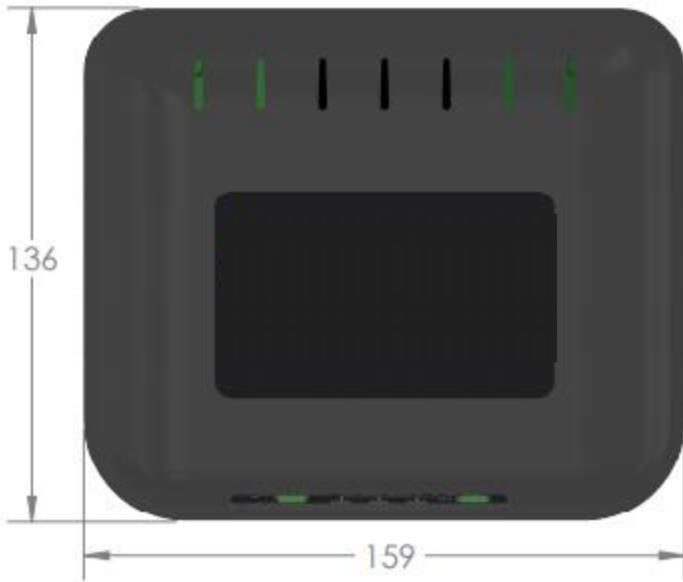


<b>Power Requirement</b>	24 VDC +/- 10% @ 1.7 A
<b>Control Interface</b>	24 VDC digital I/O 3 Inputs – Trigger
	(1) 1-5V Analog Output Grip Strength & Release Amount
<b>IP Class</b>	IP20



Specification	Value	Notes
Mass	1.7 kg	
Dimensions (L x W x H)	15.9 cm x 13.6 cm x 10.4 cm	Dimensions do not include electrical connectors
Mounting	6x M4x0.7 tapped holes	To be mounted inside Universal Robots control cabinets
Output Air Pressure	-0,34 to +0,68 bar	
Operating Environment	5 – 40 C / 80% non-condensing humidity / <2000m above MSL	
Output Air Connection	8mm OD tubing	PU hardness 95A Nylon hardness 55D

**CONTACT US**



**CONTACT US**