

Operating Instructions

Compact Ejector SCPSb

Note

The Operating instructions were originally written in German. Store in a safe place for future reference. Subject to technical changes without notice. No responsibility is taken for printing or other types of errors.

Published by

© J. Schmalz GmbH, 10/22

This document is protected by copyright. J. Schmalz GmbH retains the rights established thereby. Reproduction of the contents, in full or in part, is only permitted within the limits of the legal provisions of copyright law. Any modifications to or abridgments of the document are prohibited without explicit written agreement from J. Schmalz GmbH.

Contact

J. Schmalz GmbH
Johannes-Schmalz-Str. 1
72293 Glatten, Germany
T: +49 7443 2403-0
schmalz@schmalz.de
www.schmalz.com

Contact information for Schmalz companies and trade partners worldwide can be found at:
www.schmalz.com/salesnetwork

Contents

1 Important Information	5
1.1 Note on Using this Document	5
1.2 The technical documentation is part of the product	5
1.3 Type Plate	6
1.4 Symbol	6
2 Fundamental Safety Instructions	7
2.1 Intended Use	7
2.2 Non-Intended Use	7
2.3 Personnel Qualification	7
2.4 Warnings in This Document	8
2.5 Residual Risks	8
2.6 Modifications to the Product	9
3 Product Description	10
3.1 Ejector Designation	10
3.2 Ejector Structure	10
4 Technical Data	11
4.1 General Parameters	11
4.2 Electrical Parameters	11
4.3 Performance Data	11
4.4 Dimensions	12
4.5 Pneumatic Circuit Plans	12
5 General Description of Functions	14
5.1 Applying Suction to the Workpiece/Part	14
5.2 Depositing the Workpiece/Part (Blowing Off)	14
5.3 Changing the Blow-Off Flow Rate on the Ejector	14
6 Checking the Delivery	15
7 Installation	16
7.1 Installation Instructions	16
7.2 Mounting	16
7.3 Pneumatic Connection	17
7.4 Electrical connection	18
8 Operation	20
8.1 Safety Instructions for Operation	20
8.2 General Preparations	20
9 Help with Faults	21
10 Maintenance	22
10.1 Safety Instructions	22
10.2 Cleaning the Ejector	22
10.3 Replacing the Silencer Insert	22
11 Warranty	23

12 Spare and Wearing Parts	24
13 Accessories	25
14 Decommissioning and Recycling	26
14.1 Disposing of the Product.....	26
14.2 Materials Used	26
15 Declarations of Conformity	27
15.1 EC Conformity	27
15.2 UKCA Conformity	27

1 Important Information

1.1 Note on Using this Document

J. Schmalz GmbH is generally referred to as Schmalz in this document.

The document contains important notes and information about the different operating phases of the product:

- Transport, storage, start of operations and decommissioning
- Safe operation, required maintenance, rectification of any faults

The document describes the product at the time of delivery by Schmalz and is aimed at:

- Installers who are trained in handling the product and can operate and install it
- Technically trained service personnel performing the maintenance work
- Technically trained persons who work on electrical equipment

1.2 The technical documentation is part of the product

1. For problem-free and safe operation, follow the instructions in the documents.
2. Keep the technical documentation in close proximity to the product. The documentation must be accessible to personnel at all times.
3. Pass on the technical documentation to subsequent users.
 - ⇒ Failure to follow the instructions in these Operating instructions may result in injuries!
 - ⇒ Schmalz is not liable for damage or malfunctions that result from failure to heed these instructions.

If you still have questions after reading the technical documentation, contact Schmalz Service at:

www.schmalz.com/services

1.3 Type Plate

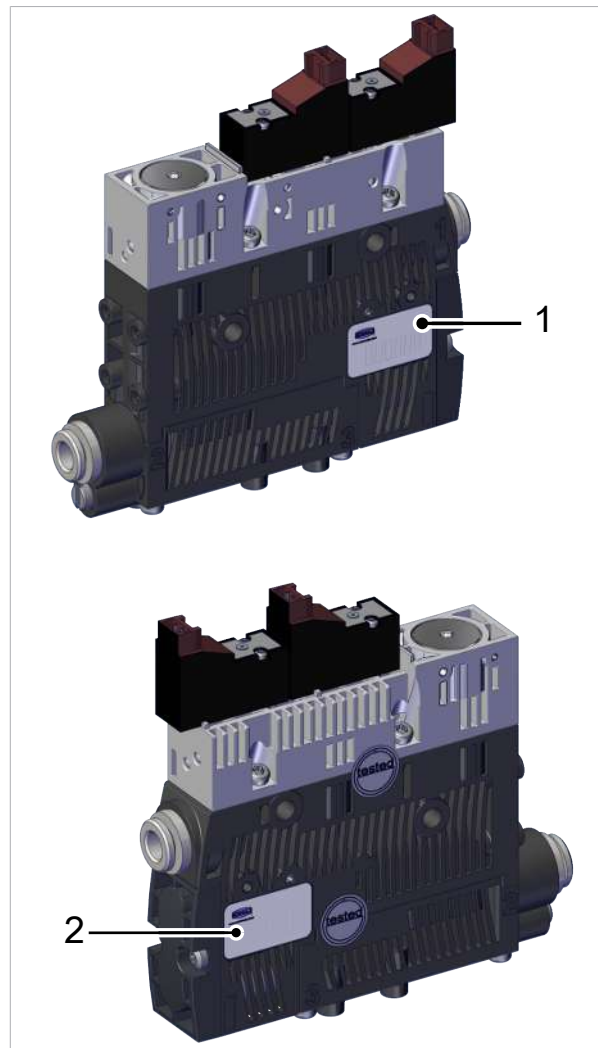
The type plates (1) and (2) are permanently attached to the product and must always be clearly legible.

Type plate (1) contains the following information:

- EAC label
- Pneumatic symbol
- Part sales designation/type
- Part number
- Permitted pressure range

Type plate (2) contains the following information:

- CE label
- EAC label
- QR code
- Coded date of manufacture
- Serial number



1.4 Symbol



This symbol indicates useful and important information.

- ✓ This symbol represents a prerequisite that must be met prior to an operational step.
- ▶ This symbol represents an action to be performed.
- ⇒ This symbol represents the result of an action.

Actions that consist of more than one step are numbered:

1. First action to be performed.
2. Second action to be performed.

2 Fundamental Safety Instructions

2.1 Intended Use

The ejector is designed to generate a vacuum for gripping and transporting objects when used in conjunction with suction cups. The ejector is operated with discrete control signals.

Neutral gases are approved as evacuation media. Neutral gases include air, nitrogen and inert gases (e.g. argon, xenon and neon).

The product is built in accordance with the latest standards of technology and is delivered in a safe operating condition; however, hazards may arise during use.

The product is intended for industrial use.

Intended use includes observing the technical data and the installation and operating instructions in this manual.

2.2 Non-Intended Use

Schmalz accepts no liability for damages caused by non-intended usage of the ejector.

In particular, the following are considered non-intended use:

- Use in potentially explosive atmospheres
- Use in medical applications
- Evacuation of objects that are in danger of imploding

2.3 Personnel Qualification

Unqualified personnel cannot recognize dangers and are therefore exposed to higher risks!

The operating company must ensure the following points:



- The personnel must be commissioned for the activities described in these operating instructions.
- The staff must be at least 18 years of age and physically and mentally capable.
- The operating staff have been instructed in the operation of the product and have read and understood the operating instructions.
- Installation, maintenance, and repairs must be carried out only by specialists or by persons who can prove that they have undergone appropriate training.

Valid for Germany:

A qualified employee is defined as an employee who has received technical training and has the knowledge and experience – including knowledge of applicable regulations – necessary to enable him or her to recognize possible dangers and implement the appropriate safety measures while performing tasks. Qualified personnel must observe the pertinent industry-specific rules and regulations.

2.4 Warnings in This Document

Warnings warn against hazards that may occur when handling the product. The signal word indicates the level of danger.

Signal word	Meaning
 WARNING	Indicates a medium-risk hazard that could result in death or serious injury if not avoided.
 CAUTION	Indicates a low-risk hazard that could result in minor or moderate injury if not avoided.
NOTE	Indicates a danger that leads to property damage.

2.5 Residual Risks



WARNING

Noise pollution due to the escape of compressed air

Hearing damage!

- ▶ Wear ear protectors.
- ▶ The ejector must only be operated with a silencer.



WARNING

Extraction of hazardous media, liquids or bulk material

Personal injury or damage to property!

- ▶ Do not extract harmful media such as dust, oil mists, vapors, aerosols etc.
- ▶ Do not extract aggressive gases or media such as acids, acid fumes, bases, biocides, disinfectants or detergents.
- ▶ Do not extract liquids or bulk materials, e.g. granulates.



WARNING

Uncontrolled movements of system components or falling objects caused by incorrect activation and switching of the Ejector while persons are in the plant (safety door opened and actuator circuit switched off)

Serious injury

- ▶ Ensure that the components are enabled via the actuator voltage by installing a potential separation between the sensor and actuator voltage.
- ▶ Wear the required personal protective equipment (PPE) when working in the danger zone.



CAUTION

Depending on the purity of the ambient air, the exhaust air can contain particles, which escape from the exhaust air outlet at high speed.

Eye injuries!

- ▶ Do not look into the exhaust air flow.
- ▶ Wear eye protection.



⚠ CAUTION

Vacuum close to the eye

Severe eye injury!

- ▶ Wear eye protection.
 - ▶ Do not look into vacuum openings such as suction lines and hoses.
-

2.6 Modifications to the Product

Schmalz assumes no liability for consequences of modifications over which it has no control:

1. The product must be operated only in its original condition as delivered.
2. Use only original spare parts from Schmalz.
3. The product must be operated only in perfect condition.

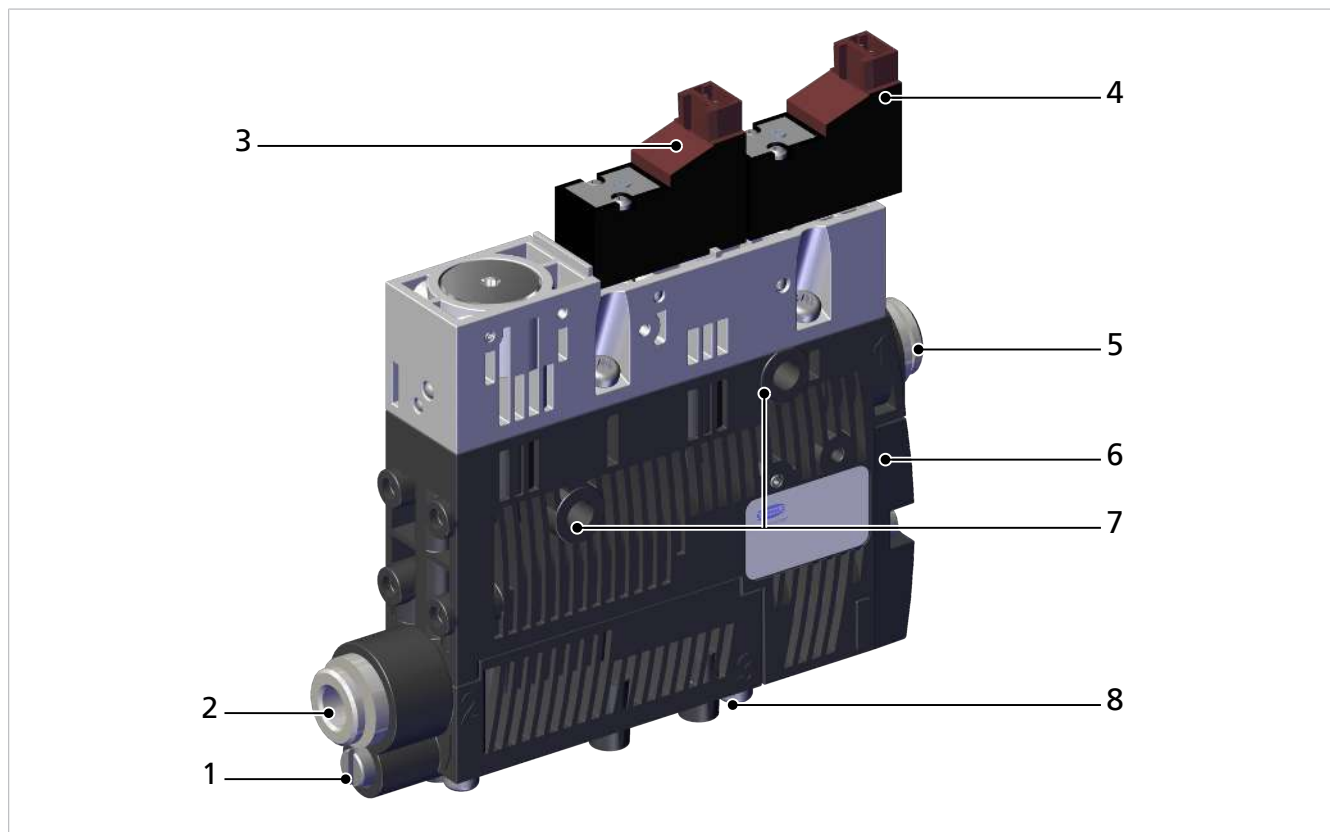
3 Product Description

3.1 Ejector Designation

The breakdown of the item designation (e.g. SCPSb-10-S4-NO) is as follows:

Property	Variants
Type of ejector	SCPSb
Performance class	07, 10, 15
Pneumatic connection	S4 (2x D6) S2 (D6 to 1, D8 to 2)
Electrical connection	Via the plug connection of the pilot valves
Idle position	NO (normally open), NC (normally closed)

3.2 Ejector Structure



1	Blow off valve screw	5	D6 compressed air connection (marking 1 [P])
2	D6/D8 vacuum connection (marking 2 [V])	6	Silencer cover
3	"Suction" pilot valve	7	Mounting hole (2x)
4	"Blow off" pilot valve	8	Exhaust outlet (marking 3)

4 Technical Data

4.1 General Parameters

Parameter	Symbol	Limit value			Unit	Comment
		min.	typ.	max.		
Working temperature	T_{amb}	0	---	50	° C	---
Storage temperature	T_{Sto}	-10	---	60	° C	---
Humidity	H_{rel}	10	---	90	% r.h.	Free from condensation
Degree of protection	---	---	---	IP65	---	---
Operating pressure (flow pressure)	P	3	4	6	bar	---
Max. vacuum	p	---	---	-850	mbar	---
Operating medium	Air or neutral gas, 20 µm filtered, with or without oil, class 3-3-3 compressed air quality in acc. with ISO 8573-1					

4.2 Electrical Parameters

Parameter	Symbol	Limit values			Unit	Comment
		min.	typ.	max.		
Supply voltage	U_{SA}	22.8	24	26.4	V DC	PELV ¹⁾
Power consumption from U_A ²⁾ with NO variant	$I_{S/A}$	---	---	110	mA	$U_{S/A} = 24.0 V$
Power consumption from U_A ²⁾ with NC variant	$I_{S/A}$	---	---	55	mA	$U_{S/A} = 24.0 V$

1) The power supply must correspond to the regulations in accordance with EN60204 (protected extra-low voltage).

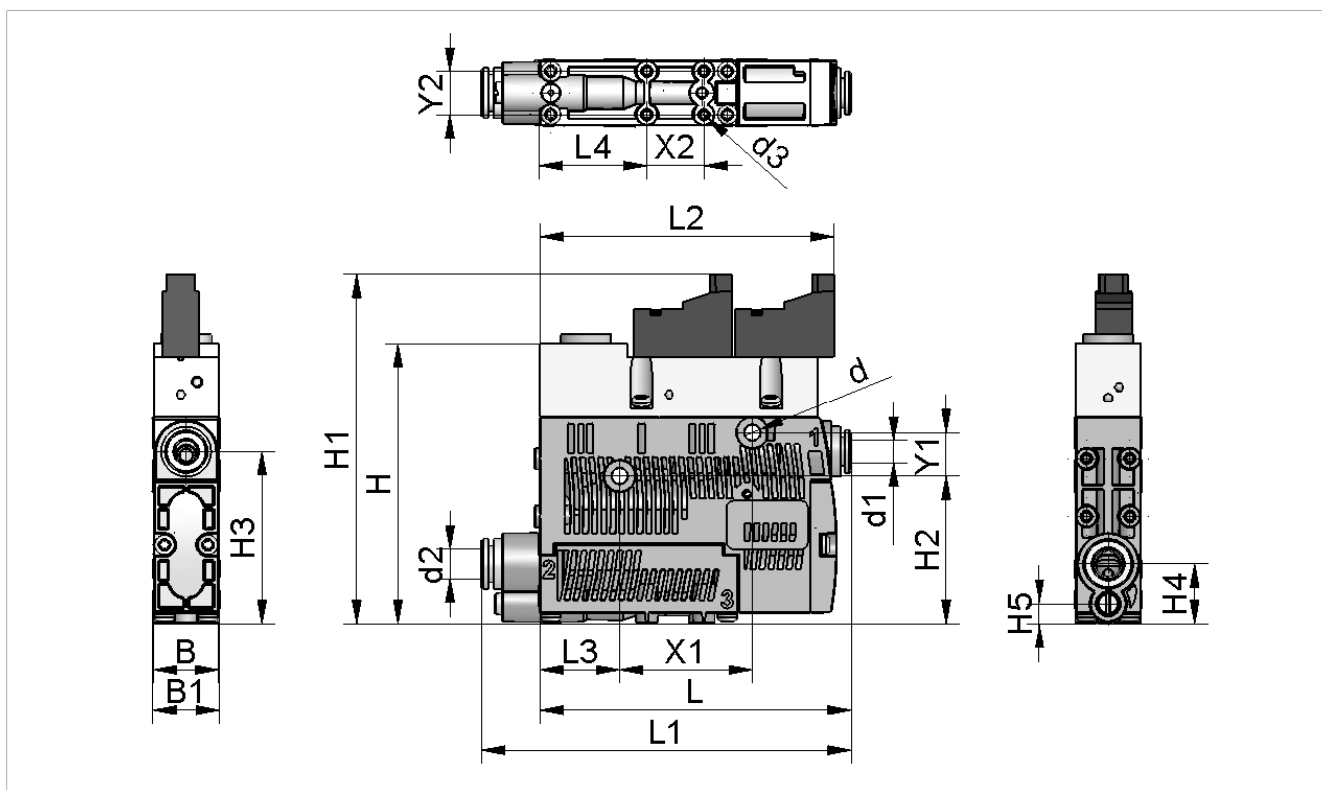
2) Simultaneous activation of the "suction" and "blow off" valves

4.3 Performance Data

Type	SCPSb-07	SCPSb-10	SCPSb-15
Nozzle size [mm]	0.7	1.0	1.5
Max. vacuum ¹ [%]	85		
Suction rate ¹ [l/min]	16	34	63
Max. blow off capacity ¹ [l/min]	120		
Air consumption ¹ (suction) [l/min]	25	42	95
Sound level ¹ , unobstructed suction [dB(A)]	63	75	77
Sound level ¹ , suction [dB(A)]	58	61	65
Weight [kg]	0.195		

¹⁾ At 4.0 bar

4.4 Dimensions



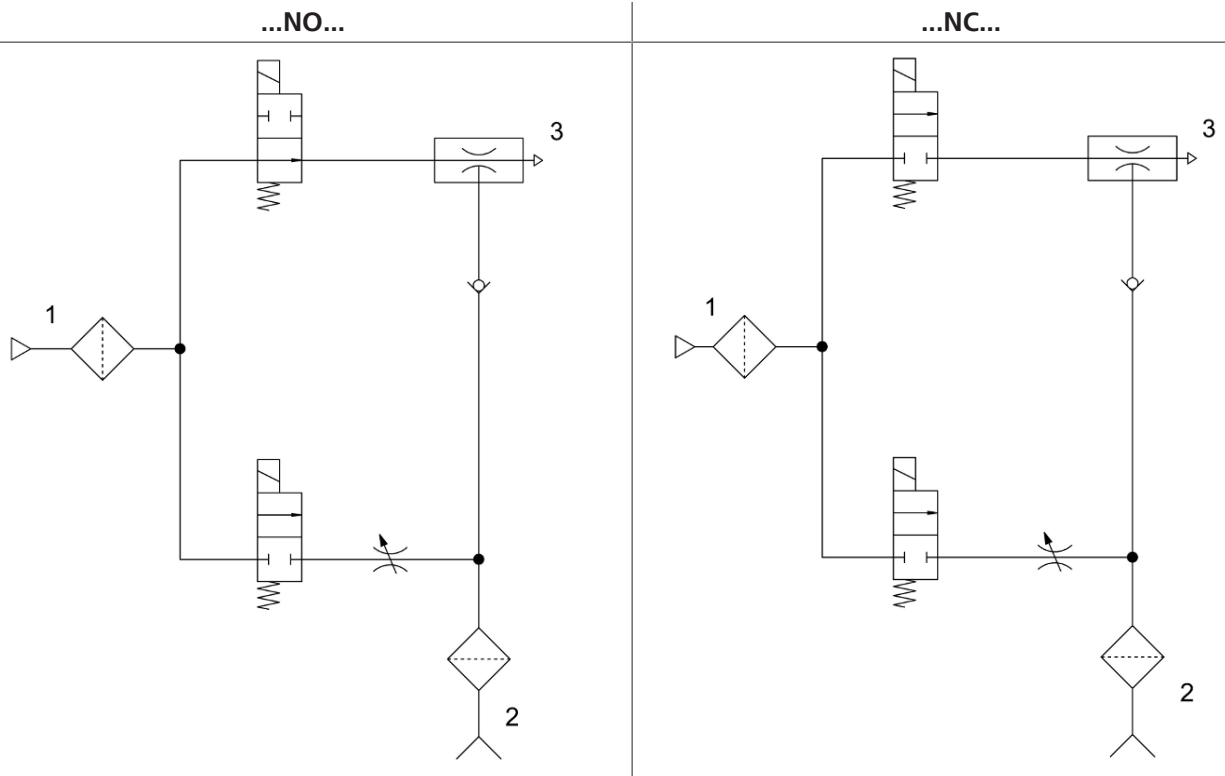
L	L1	L2	L3	L4	B	B1	H	H1	H2	H3	H4
86.2	102.5	81.4	22	29.5	18	18.6	77.5	97	40.8	47.5	16.5
H5	d	d1	d2	d3	X1	X2	Y1	Y2			
5.5	4.4	6	6	2.6	36.9	16	12	12			

All specifications are in mm

4.5 Pneumatic Circuit Plans

Key:

NC	Normally closed
NO	Normally open
1	Compressed air connection
2	Vacuum connection
3	Exhaust outlet



5 General Description of Functions

5.1 Applying Suction to the Workpiece/Part

The ejector is designed for vacuum handling of airtight parts in combination with suction systems. The vacuum is generated in a nozzle according to the Venturi principle, using suction generated by the flow of accelerated compressed air. Compressed air is channeled into the ejector and flows through the nozzle. A vacuum is generated immediately downstream of the motive nozzle; this causes the air to be sucked through the vacuum connection. The air and compressed air that have been removed by the suction exit together via the silencer or exhaust air channel.

The "Suction" pilot valve is controlled directly.

- In the NO (normally open) variant, the venturi nozzle is deactivated when the suction signal is received.
- In the NC (normally closed) variant, the venturi nozzle is activated when the suction signal is received.

When objects with airtight surfaces are picked up, the integrated non-return valve prevents the vacuum from dropping.

5.2 Depositing the Workpiece/Part (Blowing Off)

In blow off mode, the vacuum circuit of the ejector is supplied with compressed air. This ensures that the vacuum drops quickly, allowing the workpiece/part to be deposited quickly.

The "Blow off" pilot valve is controlled directly. The ejector switches to blow off mode for as long as the signal is present.

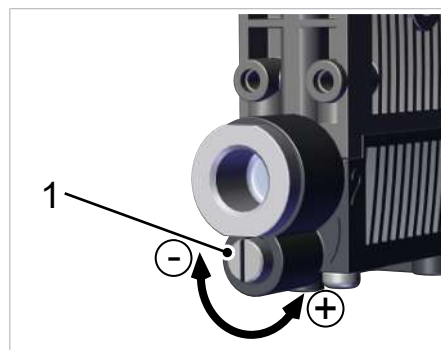
5.3 Changing the Blow-Off Flow Rate on the Ejector



Do not overwind past the stop on the valve screw. A minimum flow rate of approx. 10% is always necessary for technical reasons. The blow off volume flow can be set between 10% and 100%.

The figure shows the position of the valve screw (1) for adjusting the blow off flow rate. The valve screw is equipped with a stop on both sides.

- Rotate the valve screw (1) clockwise to reduce the flow rate.
- Rotate the valve screw (1) counterclockwise to increase the flow rate.



6 Checking the Delivery

The scope of delivery can be found in the order confirmation. The weights and dimensions are listed in the delivery notes.

1. Compare the entire delivery with the supplied delivery notes to make sure nothing is missing.
2. Damage caused by defective packaging or occurring in transit must be reported immediately to the carrier and J. Schmalz GmbH.

7 Installation

7.1 Installation Instructions



CAUTION

Improper installation or maintenance

Personal injury or damage to property

- ▶ During installation and maintenance, make sure that the product is disconnected and depressurized and that it cannot be switched on again without authorization.

For safe installation, the following instructions must be observed:

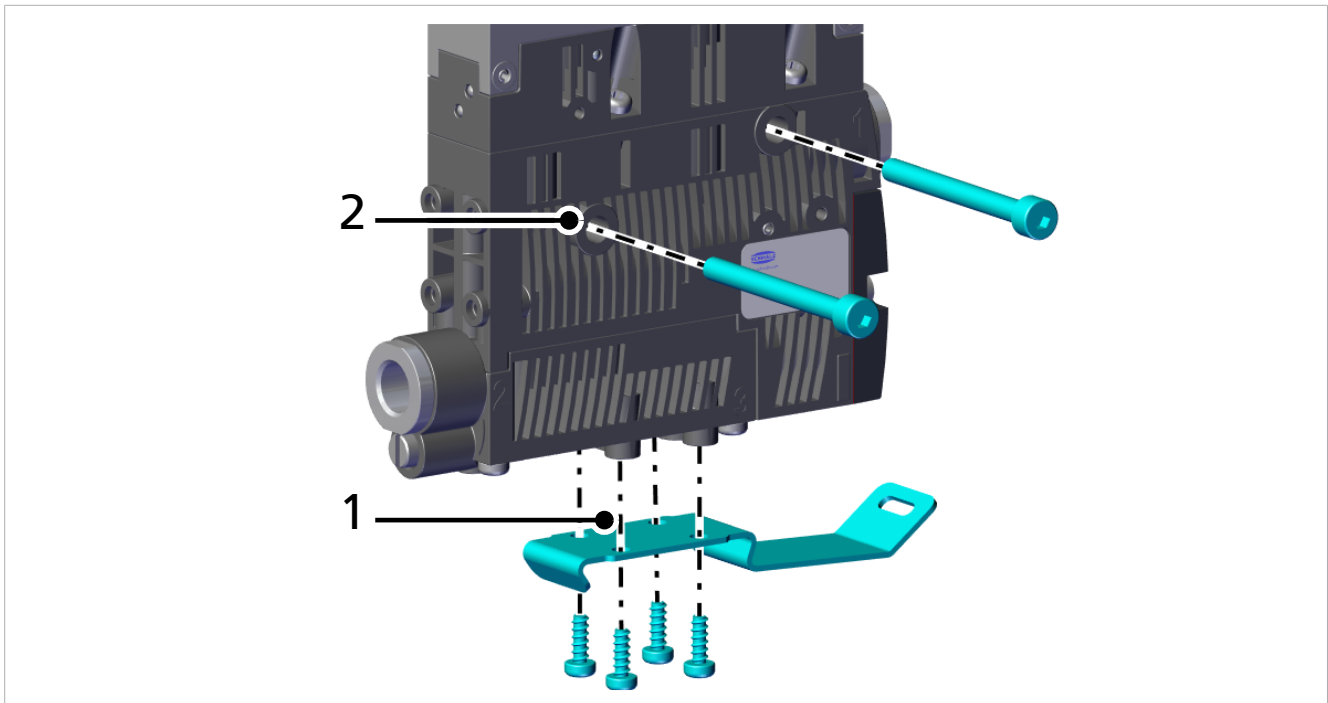
- Use only the connectors, mounting holes and attachment materials that have been provided.
- Mounting and removal must be performed only when the device is unpressurized and disconnected from the mains.
- Pneumatic and electrical line connections must be securely connected and attached to the product.

7.2 Mounting

The ejector can be installed in any position.

There are two 4.4 mm mounting holes for mounting the ejector.

A DIN rail mount for DIN rail TS35 can be used as a mounting option.



1 DIN rail mount for TS35 DIN rail, incl. plastic tapping screws
Max. tightening torque 0.5 Nm

2 2x M4 fastening screws with washers

When mounting with fastening screws, use M4 washers (2 Nm max. tightening torque).

For the start of operations, the ejector must be connected to the controller via the connection plug with a connection cable. The compressed air required to generate the vacuum is connected via the compressed air connection. The compressed air supply must be supplied by the higher-level machine.

The vacuum circuit is connected to the vacuum connection.

The installation process is described and explained in detail below.

7.3 Pneumatic Connection



CAUTION

Compressed air or vacuum in direct contact with the eye

Severe eye injury

- ▶ Wear eye protection
- ▶ Do not look into compressed air openings
- ▶ Do not look into the silencer air stream
- ▶ Do not look into vacuum openings, e.g. suction cups



CAUTION

Noise pollution due to incorrect installation of the pressure and vacuum connections

Hearing damage

- ▶ Correct installation.
- ▶ Wear ear protectors.

7.3.1 Connecting the Compressed Air and Vacuum

The compressed air connection is marked with the number 1 on the ejector.

- ▶ Connect the compressed air hose. The max. tightening torque is 3 Nm.

The vacuum connection is marked with the number 2 on the ejector.

- ▶ Connect the vacuum hose. The max. tightening torque is 3 Nm.

7.3.2 Instructions for the Pneumatic Connection

Use only screw unions with cylindrical G-threads for the compressed air and vacuum connection!

To ensure problem-free operation and a long service life of the ejector, only use adequately maintained compressed air and consider the following requirements:

- Use of air or neutral gas in accordance with EN 983, filtered 20 µm, oiled or unoiled.
 - Dirt particles or foreign bodies in the ejector connections, hoses or pipelines can lead to partial or complete ejector malfunction.
1. Shorten the hoses and pipelines as much as possible.
 2. Keep hose lines free of bends and crimps.
 3. Only use a hose or pipe with the recommended internal diameter to connect the ejector, otherwise use the next largest diameter.
 - On the compressed air side, ensure that the internal diameter has the dimensions required for the ejector to achieve its performance data.
 - On the vacuum side, ensure that the internal diameters have the necessary dimensions for preventing high flow resistance. If the selected internal diameter is too small, the flow resistance and the evacuation times increase and the blow off times are extended.

The following table shows the recommended line cross-sections (internal diameter):

Performance class	Line cross-section (internal diameter) in mm ¹⁾	
	Pressure side	Vacuum side
07	4	4
10	4	4
15	4	6

¹⁾Based on a maximum hose length of 2 m.

- ▶ For longer hose lengths, the cross-sections must also be larger.

7.4 Electrical connection



⚠ WARNING

Electric shock

Risk of injury

- ▶ Operate the product using a power supply unit with protected extra-low voltage (PELV).



⚠ WARNING

By activating/deactivating the product, output signals lead to an action in the production process!

Personal injury

- ▶ Avoid possible danger zone.
- ▶ Remain vigilant.

**NOTE****Incorrect power supply**

Destruction of the integrated electronics

- ▶ Operate the product using a power supply unit with protected extra-low voltage (PELV).
- ▶ The system must incorporate safe electrical cut-off of the power supply in compliance with EN60204.
- ▶ Do not connect or disconnect the connector under tension and/or when voltage is applied.

- ▶ Insert the connectors for the solenoid valves until they engage.

Schmalz connection lines can be used to connect the ejector directly to the controller.



Polarity does not have to be observed when connecting the valves.

- ▶ Actuate the lock lever to dismantle.

8 Operation

8.1 Safety Instructions for Operation



⚠ WARNING

Change of output signals when product is switched on or plug is connected

Risk of injury to persons and damage to property due to uncontrolled movements of the higher-level machine/system!

- ▶ The electrical connection must be performed only by specialists who can evaluate the effects of signal changes on the overall system.



⚠ CAUTION

When the system is started in automatic operation, components move without advanced warning.

Risk of injury

- ▶ Ensure that the danger zone of the machine or system is free of persons during automatic operation.

8.2 General Preparations

Always carry out the following tasks before activating the system:

1. Before each start of operations, check that the safety features are in perfect condition.
2. Check the ejector for visible damage and deal with any problems immediately (or notify your supervisor).
3. Ensure that only authorized personnel are present in the working area of the machine or system and that no other personnel are put in danger by switching on the machine.

There must be no people in the system danger area while it is in operation.

9 Help with Faults

Fault	Cause	Solution
Ejector does not respond	No actuator supply voltage	▶ Check electrical connection and pin assignment
	No compressed air supply	▶ Check the compressed air supply.
	Ejector is faulty.	▶ Check the ejector and contact Schmalz Service if necessary.
Vacuum level is not reached or vacuum is created too slowly	Press-in screen in contaminated	▶ Replace screen
	Silencer is dirty	▶ Replace silencer insert
	Hose or screw unions are leaking	▶ Replace or seal components
	Leakage at suction cup	▶ Eliminate leakage from suction cup
	Operating pressure too low	▶ Increase operating pressure, observe maximum limits
Load cannot be held	Vacuum level too low	▶ Increase operating pressure, observe maximum limits
	Suction cup too small	▶ Select a larger suction cup

10 Maintenance

10.1 Safety Instructions

Maintenance work may only be carried out by qualified personnel.

- ▶ Create atmospheric pressure in the ejector's compressed air circuit before working on the system!



⚠ WARNING

Failure to follow the instructions in these Operating instructions may result in injuries!

- ▶ Read the Operating instructions carefully and observe the contents.



⚠ WARNING

Risk of injury due to incorrect maintenance or troubleshooting

- ▶ Check the proper functioning of the product, especially the safety features, after every maintenance or troubleshooting operation.



NOTE

Incorrect maintenance work

Damage to the ejector!

- ▶ Always switch off the supply voltage before carrying out maintenance work.
- ▶ Secure it so that it cannot be switched back on.
- ▶ The ejector must be operated only with a silencer and press-in screen(s).

10.2 Cleaning the Ejector

1. For cleaning, do not use aggressive cleaning agents such as industrial alcohol, white spirit or thinners. Only use cleaning agents with pH 7–12.
2. Remove dirt on the exterior of the device with a soft cloth and soap suds at a maximum temperature of 60° C. Make sure that the silencer is not soaked in soapy water.
3. Ensure that no moisture can reach the electrical connection or other electrical components.

10.3 Replacing the Silencer Insert

Heavy infiltration of dust, oil, and so on, may contaminate the silencer insert and reduce the suction capacity. Cleaning the silencer insert is not recommended due to the capillary effect of the porous material.

11 Warranty

This system is guaranteed in accordance with our general terms of trade and delivery. The same applies to spare parts, provided that these are original parts supplied by us.

We are not liable for any damage resulting from the use of non-original spare parts or accessories.

The exclusive use of original spare parts is a prerequisite for the proper functioning of the ejector and for the validity of the warranty.

Wearing parts are not covered by the warranty.

Opening the ejector will damage the "tested" labels. This voids the warranty.

12 Spare and Wearing Parts

Maintenance work may only be carried out by qualified personnel.

- ▶ **WARNING! Risk of injury due to improper maintenance!** After performing any maintenance or repair work, check that the system is functioning correctly, particularly the safety features.



NOTE

Incorrect maintenance work

Damage to the ejector!

- ▶ Always switch off the supply voltage before carrying out maintenance work.
- ▶ Secure it so that it cannot be switched back on.
- ▶ Ejector must be operated only with a silencer and press-in screens.

The following list contains the most important spare and wearing parts.

Part no.	Designation	Legend	Max. tightening torque
10.02.02.04141	Silencer insert	Wearing part	
10.05.01.00104	"Blow-off" pilot valve, type NO/NC	Spare part	0.2 Nm
10.05.01.00104	"Suction" pilot valve, type NC	Spare part	0.2 Nm
10.05.01.00103	"Suction" pilot valve, type NC	Spare part	0.2 Nm
10.02.02.04152	Insulating plate	Wearing part	

When tightening the fastening screws on the silencer module, observe a maximum tightening torque of 0.5 Nm.



When you replace the silencer insert, we recommend that you also replace the insulating plate.

13 Accessories

Part no.	Designation	Note
21.04.06.00086	Connection cable	for pilot valves
10.02.02.04149	DIN rail mount	for DIN rail TS35

14 Decommissioning and Recycling

14.1 Disposing of the Product

1. Dispose of the product properly after replacement or decommissioning.
2. Observe the country-specific guidelines and legal obligations for waste prevention and disposal.

14.2 Materials Used

Component	Material
Housing	PA6-GF, PC-ABS
Inner components	Aluminum alloy, anodized aluminum alloy, brass, galvanized steel, stainless-steel, PU, POM
Silencer insert	Porous PE
Screws	Galvanized steel
Seals	Nitrile rubber (NBR)
Lubrication	Silicone-free

15 Declarations of Conformity

15.1 EC Conformity

EU Declaration of Conformity

The manufacturer Schmalz confirms that the product Ejector described in these Operating instructions fulfills the following applicable EU directives:

2014/30/EU	Electromagnetic Compatibility
2011/65/EU	RoHS Directive

The following harmonized standards were applied:

EN ISO 12100	Safety of machinery — General principles for design — Risk assessment and risk reduction
EN 61000-6-2+AC	Electromagnetic compatibility (EMC) - Part 6-2: Generic standards - Immunity for industrial environments
EN 61000-6-3+A1+AC	Electromagnetic compatibility (EMC) - Part 6-3: Generic standards - Emission standard for residential, commercial and light-industrial environments
EN IEC 63000	Technical documentation for the assessment of electrical and electronic products with respect to the restriction of hazardous substances



The EU Declaration of Conformity valid at the time of product delivery is delivered with product or made available online. The standards and directives cited here reflect the status at the time of publication of the operating and assembly instructions.

15.2 UKCA Conformity

The manufacturer Schmalz confirms that the product described in these operating instructions fulfills the following applicable UK regulations:

2016	Electromagnetic Compatibility Regulations
2012	The Restriction of the Use of Certain Hazardous Substances in Electrical and Electronic Equipment Regulations

The following designated standards were applied:

EN ISO 12100	Safety of machinery — General principles for design — Risk assessment and risk reduction
EN 61000-6-3+A1+AC	Electromagnetic compatibility (EMC) - Part 6-3: Generic standards - Emission standard for residential, commercial and light-industrial environments
EN 61000-6-2+AC	Electromagnetic compatibility (EMC) - Part 6-2: Generic standards - Immunity for industrial environments
EN IEC 63000	Technical documentation for the assessment of electrical and electronic products with respect to the restriction of hazardous substances



The Declaration of Conformity (UKCA) valid at the time of product delivery is delivered with the product or made available online. The standards and directives cited here reflect the status at the time of publication of the operating and assembly instructions.

At Your Service Worldwide



Vacuum Automation

WWW.SCHMALZ.COM/AUTOMATION

Handling Systems

WWW.SCHMALZ.COM/AUTOMATION

J. Schmalz GmbH
Johannes-Schmalz-Str. 1
72293 Glatten, Germany
T: +49 (0) 7443 2403-0
schmalz@schmalz.de
WWW.SCHMALZ.COM