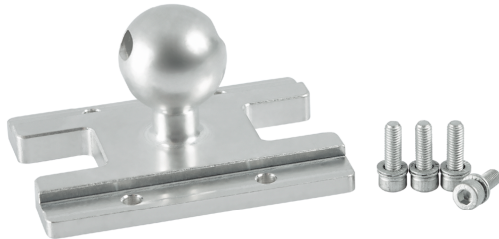


Holder System Magnetic Grippers SGM-HP/-HT (multiple)

Suitability for Industry Specific Applications

Applications

- For connecting magnetic grippers SGM-HP/-HT (multiple) to the gripping device.



Holder System Magnetic Grippers SGM-HP/-HT (multiple)

Design

- Version HTS for mounting a gripper
- Ball (A3: \varnothing 28.5 mm; A5: \varnothing 32 mm) or cylinder "Apple-Core" (A2: \varnothing 19 mm)

Product Highlights

- Universally applicable, since tooling connection is possible on different sides of the gripper
- Fast, reliable adaptation to a wide variety of workpieces thanks to outstanding connection options


Ordering Data Holder System Magnetic Grippers SGM-HP/-HT (multiple)

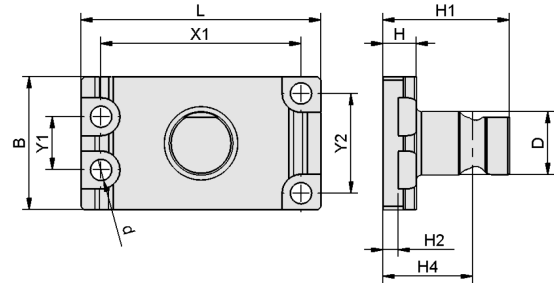
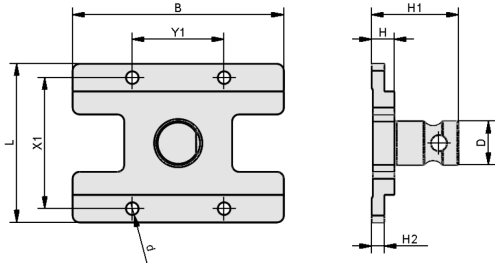
Type	Part no.
HTS-A2 SGM-HP 40x121 OP	10.01.17.00570
HTS-A3 SGM-HP 40x121 OP	10.01.17.00546
HTS-A5 SGM-HP 40x121 OP	10.01.17.00559
HTS-A2 EW SGM-HP 40x121 OP	10.01.17.00591
HTS-A3 EW SGM-HP 40x121 OP	10.01.17.00590
HTS-A5 EW SGM-HP 40x121 OP	10.01.17.00589

Technical Data Holder System Magnetic Grippers SGM-HP/-HT (multiple)

Type	Size	Shape	Material	Weight [g]
HTS-A2 EW SGM-HP 40x121 OP	40x121	End wall	Aluminum	102
HTS-A2 SGM-HP 40x121 OP	40x121	-	Aluminum	-
HTS-A3 EW SGM-HP 40x121 OP	40x121	End wall	Aluminum	115
HTS-A3 SGM-HP 40x121 OP	40x121	-	Aluminum	-
HTS-A5 EW SGM-HP 40x121 OP	40x121	End wall	Aluminum	126
HTS-A5 SGM-HP 40x121 OP	40x121	-	Aluminum	-

Holder System Magnetic Grippers SGM-HP/-HT (multiple)

 Design Data Holder System Magnetic Grippers SGM-HP/-HT (multiple)



Holder System Magnetic Grippers SGM-HP/-HT (multiple)

Design Data Holder System Magnetic Grippers SGM-HP/-HT (multiple)

Type	B [mm]	D [mm]	d [mm]	H [mm]	H1 [mm]	H2 [mm]	H4 [mm]	L [mm]	X1 [mm]	Y1 [mm]	Y2 [mm]
HTS-A2 SGM-HP 40x121 OP	92	19.0	6	9.9	38	5.5	27	69.0	57	40	-
HTS-A3 SGM-HP 40x121 OP	92	28.5	6	9.4	49	5.5	35	69.0	57	40	-
HTS-A5 SGM-HP 40x121 OP	92	32.0	6	9.4	50	5.5	35	69.0	57	40	-
HTS-A2 EW SGM-HP 40x121 OP	40	19.0	7	9.9	38	4.5	27	72.0	60	16	30
HTS-A3 EW SGM-HP 40x121 OP	40	28.5	7	9.4	49	4.5	35	72.0	60	16	30
HTS-A5 EW SGM-HP 40x121 OP	40	32.0	7	9.4	50	4.5	35	72.0	60	16	30