

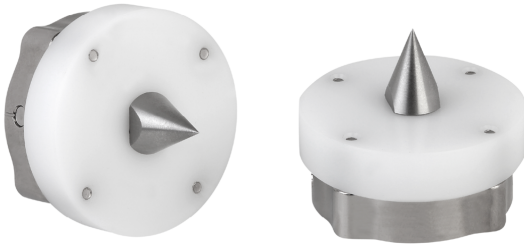
Tool Center Point VEE-TCP



Suitability for Industry Specific Applications

Applications

- Determining the tool position of an industrial robot with a tool center point that can be directly flange-mounted



Tool Center Point VEE-TCP

Design

- Tool center point with standard interface to flange modules VEE-QCM or vacuum modules VEE-QCMV

Product highlights

-

Multimedia product presentation

Medium

Product video

Link

<https://vimeo.com/147437579>

