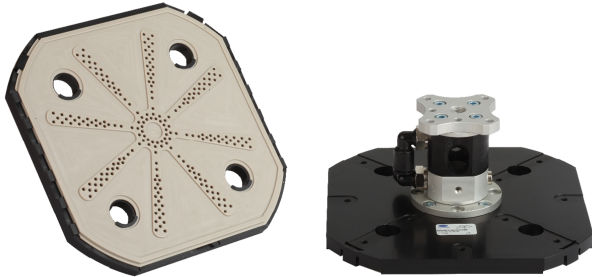
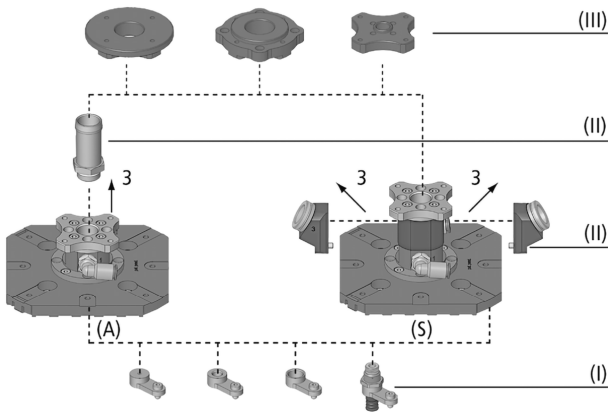


Wafer Grippers SWGm Wet



Wafer Grippers SWGm Wet



System Design Wafer Grippers SWGm Wet

Product Highlights

-

Ordering Data Wafer Grippers SWGm Wet

Type	Part no.
SWGm-6S W 146x146x65 PEEK	10.01.30.00191
SWGm-5S W 115x115x65 PEEK	10.01.30.00193

Suitability for Industry Specific Applications

Applications

- Wafer gripper for extreme fast, reliable, precise and gentle handling of wet wafers in wet bench applications
- Handling of wafers after etching and cleaning processes
- Loading and unloading of conveyor belts
- Fully or partially automated production of silicon wafers with maximum process stability, production line uptime, cell efficiency and line output

Design

- Base model version with discharging exhaust air (3) in axial (A) or lateral (S) direction
- Suction area geometries available in common cell sizes 125 mm and 156 mm (5" and 6")
- Optional component (II) for controlled discharging of exhaust air
- Modular design with accessories for the mounting of sensors and modules for suction and damping (I) and a selection of flange modules (III)
- Minimal overall height through reduced-weight plastic design
- Replaceable contact surfaces

