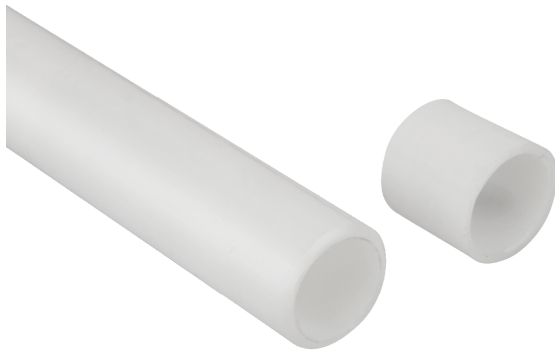


Connecting Tubes VEE-TU



Connecting Tubes VEE-TU

Design

- Connecting tube in two lengths (17.8 mm and 200 mm)
- Connecting tube made from FDA-compliant polyphenylsulfone material (PPSU)

Multimedia product presentation

Medium	Link
Product video	https://vimeo.com/147437579

Suitability for Industry Specific Applications

Applications

- Tube as mechanical and fluidic connection of connector joints

Product Highlights

-

