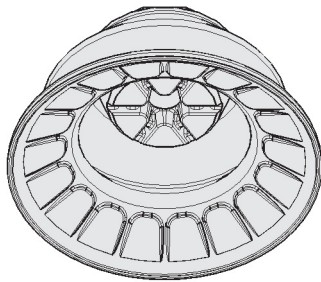


Bellows Suction Cups SAB HT2 (1.5 Folds)

Suction area (Ø) from 22 mm to 80 mm



Bellows Suction Cups SAB HT2 (1.5 Folds)



System Design Bellows Suction Cups SAB HT2 (1.5 Folds)



Bellows suction cups SAB HT2 for handling formed sheet metal parts

Suitability for Industry Specific Applications

Applications

- Round bellows suction cup with 1.5 folds for dynamic handling of hot metal sheets up to 250° C
- Handling of pre-shaped metal sheet parts, bellows shape permits optimum adaptation
- Unloading of parts after forming
- Handling of thin aluminum sheets without deformation or deep drawing
- For use e.g. in feeder systems for press lines in the automotive industry

Design

- Robust and wear resistant bellows suction cup SAB made of HT2 with 1.5 folds and special inner support
- Suction cup SAB vulcanized to the connection nipple (very high strength)

Our Highlights...

- Silicone-free special material HT2
- Large structured inner support
- Soft and flexible sealing lip
- 1.5 folds

Your Benefits...

- Absence of PWIS (paint wetting impairment substances), temperature resistance up to 250° C long term
- No deep-drawing of the workpiece; capable of handling high lateral forces
- Good sealing, even on slightly curved surfaces
- Optimum adaptation and sealing to curved workpieces, very good damping



Bellows Suction Cups SAB HT2 (1.5 Folds)

Suction area (Ø) from 22 mm to 80 mm

Designation Code Bellows Suction Cups SAB HT2 (1.5 Folds)

SAB	-	30	-	HT2-65	-	G1/4-AG
1		2		3		4

1 – Abbreviated designation

Code	Version
SAB	1.5 folds

2 – Suction area

Code	Diameter in mm
22...80	ø 22 to 80

3 – Material

Code	Material
HT2-65	High temperature material

4 – Connection

Code	Connection
G1/4-AG	G1/4-AG (AG = male (M))
G1/4-IG	G1/4-IG (IG = female (F))
G3/8-IG	G3/8-IG

Suction cup SAB HT2, available in various diameters, is delivered with connection nipple vulcanized to elastomer part.

Ordering Data Bellows Suction Cups SAB HT2 (1.5 Folds)

Type	Vacuum connection:		
	G1/4-AG	G1/4-IG	G3/8-IG
SAB 22	10.01.06.02420	10.01.06.02419	10.01.06.02421
SAB 30	10.01.06.02424	10.01.06.02423	10.01.06.02425
SAB 40	10.01.06.02428	10.01.06.02427	10.01.06.02429
SAB 50	10.01.06.03452	10.01.06.03451	10.01.06.03401
SAB 60	10.01.06.03450	10.01.06.03449	10.01.06.03354
SAB 80	10.01.06.03357	10.01.06.03356	10.01.06.03318

Technical Data Bellows Suction Cups SAB HT2 (1.5 Folds)

Type	Suction force [N]*	Pull-off force [N]	Lateral force [N]**	Volume [cm³]	Workpiece radius min. (convex) [mm]	Hose diameter (recom.) d [mm]***
SAB 22	16	24	17	1.5	20	4
SAB 30	22	33	29	5.6	40	4
SAB 40	38	59	34	7.0	40	4
SAB 50	53	91	102	18.9	25	6
SAB 60	82	136	126	32.0	30	6
SAB 80	135	238	217	75.4	40	6

*The specified suction forces are theoretical values at a vacuum of -0.6 bar and with a smooth, dry workpiece surface - they do not include a safety factor

**The specified lateral forces are values measured at a vacuum of -0.6 bar with a dry or oily, smooth, flat workpiece surface. Depending on the workpiece surface and its quality, the actual values may deviate from these values.

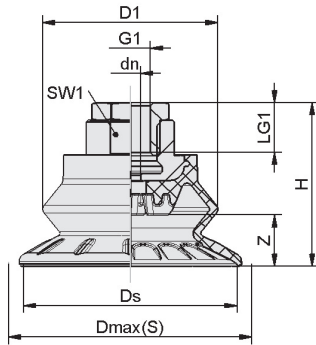
***The recommended hose diameter refers to a hose length of approx. 2 m

Bellows Suction Cups SAB HT2 (1.5 Folds)

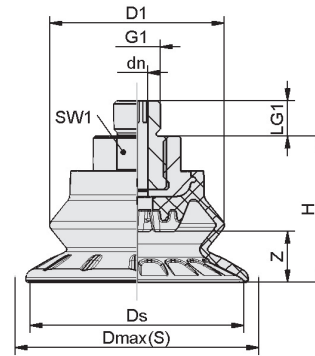
Suction area (Ø) from 22 mm to 80 mm



Design Data Bellows Suction Cups SAB HT2 (1.5 Folds)



SAB HT2 IG



SAB HT2 AG

Type*	dn [mm]	D1 [mm]	Dmax(S) [mm]**	Ds [mm]	G1	H [mm]	LG1 [mm]	SW1 [mm]	Z (Stroke) [mm]
SAB 22 HT2-65 G1/4-AG	3.5	22	24	21	G1/4"-M	25.0	10.0	16	5.8
SAB 22 HT2-65 G1/4-IG	3.5	22	24	21	G1/4"-F	25.0	12.0	16	5.8
SAB 22 HT2-65 G3/8-IG	3.5	22	24	21	G3/8"-F	41.0	9.5	22	5.8
SAB 30 HT2-65 G1/4-AG	4.0	32	34	31	G1/4"-M	28.0	10.0	17	9.0
SAB 30 HT2-65 G1/4-IG	4.0	32	34	31	G1/4"-F	28.0	12.0	17	9.0
SAB 30 HT2-65 G3/8-IG	4.0	32	34	31	G3/8"-F	44.0	9.5	22	9.0
SAB 40 HT2-65 G1/4-AG	4.0	32	45	41	G1/4"-M	29.0	10.0	17	10.0
SAB 40 HT2-65 G1/4-IG	4.0	32	45	41	G1/4"-F	29.0	12.0	17	10.0
SAB 40 HT2-65 G3/8-IG	4.0	32	45	41	G3/8"-F	44.0	9.5	22	10.0
SAB 50 HT2-65 G1/4-AG	6.0	43	56	51	G1/4"-M	36.9	10.0	22	11.5
SAB 50 HT2-65 G1/4-IG	6.0	43	56	51	G1/4"-F	41.9	20.0	22	11.5
SAB 50 HT2-65 G3/8-IG	6.0	43	56	51	G3/8"-F	36.9	15.0	22	11.5
SAB 60 HT2-65 G1/4-AG	6.0	50	67	62	G1/4"-M	41.3	10.0	22	14.5
SAB 60 HT2-65 G1/4-IG	6.0	50	67	62	G1/4"-F	46.3	20.0	22	14.5
SAB 60 HT2-65 G3/8-IG	6.0	50	67	62	G3/8"-F	41.3	15.0	22	14.5
SAB 80 HT2-65 G1/4-AG	6.0	65	88	82	G1/4"-M	49.8	10.0	22	22.0
SAB 80 HT2-65 G1/4-IG	6.0	65	88	82	G1/4"-F	54.8	15.0	22	22.0
SAB 80 HT2-65 G3/8-IG	6.0	65	88	82	G3/8"-F	49.8	15.0	22	22.0

*Acceptable dimensional tolerances for rubber parts concerning to DIN ISO 3302-1 M3

**External dimension of the suction cup when it is pressed against the workpiece by the vacuum

Schmalz – The Company
 Vacuum Suction Cups
 Special Grippers
 Gripping Systems
 Clamping Systems
 Mounting Elements
 Vacuum Generators
 Valve Technology
 Switches and Monitoring
 Filters and Connections
 Services
 Contact
 Glossary
 Index of Products

