

Accessories for Screw Unions

Connection thread M5 to G1-1/2"



Accessories for Screw Unions

Design

- Accessories made of robust brass with nickel-plated surfaces

Suitability for Industry Specific Applications

Applications

- Accessories for screw-in unions to seal threaded holes, to convert to a smaller or larger thread or to extend the unions



Product Highlights

- Wide range of accessories from one source
- Robust, reusable accessories made of high quality brass with nickel plated surface

Accessories for Screw Unions

Connection thread M5 to G1-1/2"

Ordering Data Accessories for Screw Unions

Type		Part no.
Sealing screw with collar	VRS-SB M5-AG ISKT O-Ring	10.08.06.00064
Sealing screw with collar	VRS-SB G1/8-AG ISKT O-Ring	10.08.06.00043
Sealing screw with collar	VRS-SB G1/4-AG ISKT O-Ring	10.08.06.00044 
Sealing screw with collar	VRS-SB G3/8-AG ISKT O-Ring	10.08.06.00045 
Sealing screw with collar	VRS-SB G1/2-AG ISKT O-Ring	10.08.06.00046
Sealing screw without collar	VRS-S G1/8-AG	10.08.06.00047
Sealing screw without collar	VRS-S G1/4-AG	10.08.06.00048
Sealing screw without collar	VRS-S G3/8-AG	10.08.06.00049
Sealing screw without collar	VRS-S G1/2-AG	10.08.06.00050
Sealing screw without collar	VRS-S G3/4-AG	10.08.06.00051

Type		Part no.
Bushing with hexagon	MUF-S M5-IG 9 SW8 MS-V	10.08.05.00124
Bushing with hexagon	MUF-S G1/8-IG 18 SW14 MS-V	10.08.05.00125
Bushing with hexagon	MUF-S G1/4-IG 26 SW17 MS-V	10.08.05.00126
Bushing with hexagon	MUF-S G3/8-IG 26 SW22 MS-V	10.08.05.00127
Bushing with hexagon	MUF-S G1/2-IG 30 SW27 MS-V	10.08.05.00128
Bushing with hexagon	MUF-S G3/4-IG 28 SW32 MS-V	10.08.05.00129
Bushing with hexagon	MUF-S G1-IG 33 SW41 MS-V	10.08.05.00130
Extension with hexagon	VRL-S M5x8 MS-V	10.08.04.00088
Extension with hexagon	VRL-S G1/8x15 MS-V	10.08.04.00090
Extension with hexagon	VRL-S G1/4x18 MS-V	10.08.04.00092
Extension with hexagon	VRL-S G1/2x22 MS-V	10.08.04.00097

Type		Part no.
Reduction piece with hexagon	RED-STK G1/8-AG M5-IG MS-V	10.08.04.00089
Reduction piece with hexagon	RED-STK G1/4-AG G1/8-IG MS-V	10.08.04.00091
Reduction piece with hexagon	RED-STK G3/8-AG G1/8-IG MS-V	10.08.04.00093
Reduction piece with hexagon	RED-STK G3/8-AG G1/4-IG MS-VN	10.08.04.00094
Reduction piece with hexagon	RED-STK G1/2-AG G1/4-IG MS-V	10.08.04.00095
Reduction piece with hexagon	RED-STK G1/2-AG G3/8-IG MS-V	10.08.04.00096
Reduction piece with hexagon	RED-STK G3/4-AG G3/8-IG MS-V	10.08.04.00098
Reduction piece with hexagon	RED-STK G3/4-AG G1/2-IG MS-V	10.08.04.00099
Reduction piece with hexagon	RED-STK G1-AG G1/2-IG MS-V	10.08.04.00100
Reduction piece with hexagon	RED-STK G1-AG G3/4-IG MS-V	10.08.04.00101
Double nipple with hexagon	DOP-NIP-S M5-AGx4	10.08.05.00131
Double nipple with hexagon	DOP-NIP-S G1/8-AGx5	10.08.05.00132
Double nipple with hexagon	DOP-NIP-S G1/4-AGx5	10.08.05.00133
Double nipple with hexagon	DOP-NIP-S G3/8-AGx5	10.08.05.00134
Double nipple with hexagon	DOP-NIP-S G1/2-AGx6	10.08.05.00135
Double nipple with hexagon	DOP-NIP-S G3/4-AGx8	10.08.05.00136
Double nipple with hexagon	DOP-NIP-S G1-AGx10	10.08.05.00137
Reduction nipple with hexagon	RED-NIP G1/8-AG M5-AG MS V	10.08.05.00138
Reduction nipple with hexagon	RED-NIP G1/4-AG G1/8-AG MS V	10.08.05.00139
Reduction nipple with hexagon	RED-NIP G3/8-AG G1/4-AG MS V	10.08.05.00141
Reduction nipple with hexagon	RED-NIP G1/2-AG G1/4-AG MS V	10.08.05.00140
Reduction nipple with hexagon	RED-NIP G1/2-AG G3/8-AG MS V	10.08.05.00142
Reduction nipple with hexagon	RED-NIP G3/4-AG G1/2-AG MS V	10.08.05.00143
Reduction nipple with hexagon	RED-NIP G1-AG G1/2-AG MS V	10.08.05.00144
Reduction nipple with hexagon	RED-NIP G1-AG G3/4-AG MS V	10.08.05.00145

Type		Part no.
Hose sleeve	ST M3-AG 2 MS-V	10.08.03.00151

Accessories for Screw Unions

Connection thread M5 to G1-1/2"

Type		Part no.
Hose sleeve	ST M5-AG 4 MS-V	10.08.03.00152
Hose sleeve	ST G1/8-AG 4 MS-ROH	10.08.03.00153
Hose sleeve	ST G1/8-AG 6 MS-V	10.08.03.00154
Hose sleeve	ST G1/8-AG 9 MS-V	10.08.03.00155
Hose sleeve	ST G1/4-AG 6 MS-V	10.08.03.00156
Hose sleeve	ST G1/4-AG 9 MS-V	10.08.03.00157
Hose sleeve	ST G1/4-AG 13 MS-V	10.08.03.00158
Hose sleeve	ST G3/8-AG 9 MS-V	10.08.03.00159
Hose sleeve	ST G3/8-AG 13 MS-V	10.08.03.00160
Hose sleeve	ST G1/2-AG 9 MS-V	10.08.03.00161
Hose sleeve	ST G1/2-AG 13 MS-V	10.08.03.00162
Hose sleeve	ST G1/2-AG 19 MS-V	10.08.03.00163
Hose sleeve	ST G3/4-AG 13 MS-V	10.08.03.00164
Hose sleeve	ST G3/4-AG 19 MS-V	10.08.03.00165
Hose sleeve	ST G3/4-AG 25 MS-V	10.08.03.00166
Hose sleeve	ST G1-AG 25 MS-V	10.08.03.00167
Hose sleeve	ST G1-AG 32 MS-V	10.08.03.00168
Hose sleeve	ST G1-1/4-AG 32 MS-V	10.08.03.00169
Hose sleeve	ST G1-1/4-AG 38 MS-V	10.08.03.00123
Hose sleeve	ST G1-1/2-AG 38 MS-V	10.08.03.00170

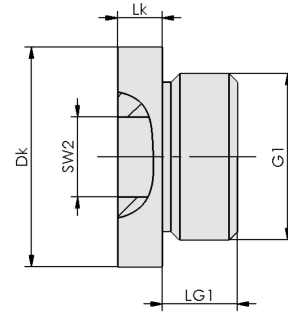
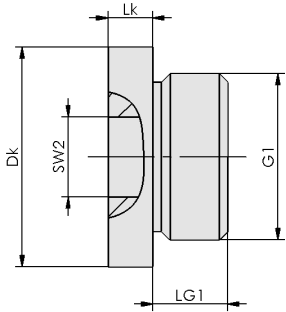
Technical Data Accessories for Screw Unions

Pressure range (operating pressure) [bar]	Operating temperature [°C]
-0.95 ... 16.00 bar	-20 ... 60 °C

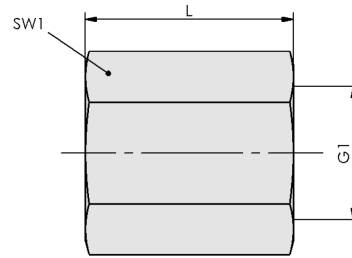
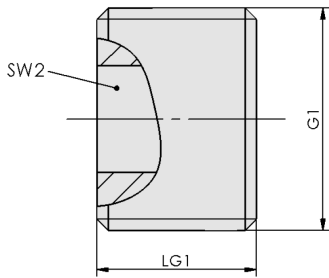
Accessories for Screw Unions

Connection thread M5 to G1-1/2"

Design Data Accessories for Screw Unions

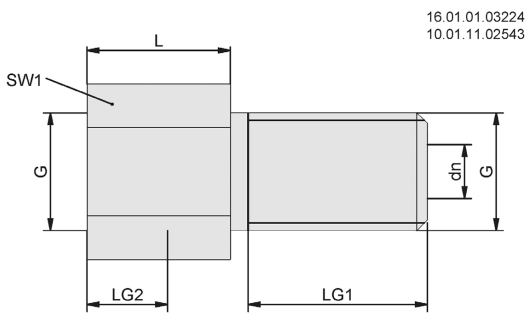


VRS-SB

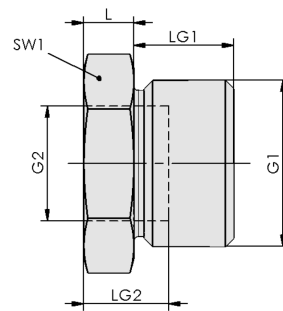


VRS-S

MUF-S



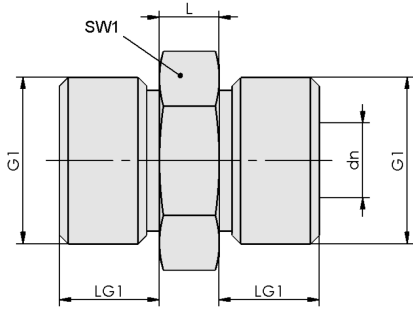
16.01.01.03224
10.01.11.02543



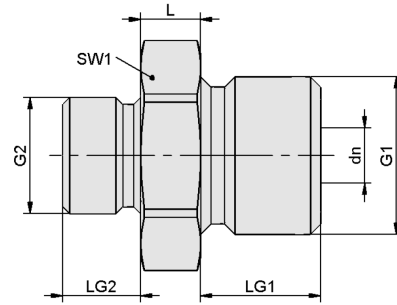
RED-STK

Accessories for Screw Unions

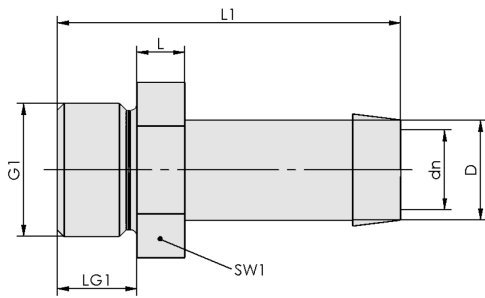
Connection thread M5 to G1-1/2"



DOP-NIP



RED-NIP



ST

Accessories for Screw Unions

Connection thread M5 to G1-1/2"

Design Data Accessories for Screw Unions

Type	Dk [mm]	G1	LG1 [mm]	Lk [mm]	SW2 [mm]
VRS-SB M5-AG ISKT O-Ring	8	M5-M	5.0	2.5	3
VRS-SB G1/8-AG ISKT O-Ring	14	G1/8"-M	5.5	3.5	5
VRS-SB G1/4-AG ISKT O-Ring	18	G1/4"-M	7.5	4.5	6
VRS-SB G3/8-AG ISKT O-Ring	22	G3/8"-M	7.5	4.5	8
VRS-SB G1/2-AG ISKT O-Ring	27	G1/2"-M	9.5	5.0	10
VRS-S G1/8-AG	-	G1/8"-M	6.0	-	5
VRS-S G1/4-AG	-	G1/4"-M	9.0	-	6
VRS-S G3/8-AG	-	G3/8"-M	10.0	-	8
VRS-S G1/2-AG	-	G1/2"-M	12.0	-	10
VRS-S G3/4-AG	-	G3/4"-M	10.0	-	12

Type	dn [mm]	G1	G2	L [mm]	LG1 [mm]	LG2 [mm]	SW1 [mm]
MUF-S M5-IG 9 SW8 MS-V	-	M5-F	-	9	-	-	8
MUF-S G1/8-IG 18 SW14 MS-V	-	G1/8"-F	-	18	-	-	14
MUF-S G1/4-IG 26 SW17 MS-V	-	G1/4"-F	-	26	-	-	17
MUF-S G3/8-IG 26 SW22 MS-V	-	G3/8"-F	-	26	-	-	22
MUF-S G1/2-IG 30 SW27 MS-V	-	G1/2"-F	-	30	-	-	27
MUF-S G3/4-IG 28 SW32 MS-V	-	G3/4"-F	-	28	-	-	32
MUF-S G1-IG 33 SW41 MS-V	-	G1"-F	-	33	-	-	41
VRL-S M5x8 MS-V	2.5	-	-	8	4.5	6.6	8
VRL-S G1/8x15 MS-V	5.0	-	-	15	8.0	13.0	14
VRL-S G1/4x18 MS-V	7.0	-	-	18	10.0	15.0	17
VRL-S G1/2x22 MS-V	12.0	-	-	22	12.0	16.3	24

Type	dn [mm]	G1	G2	L [mm]	LG1 [mm]	LG2 [mm]	SW1 [mm]
RED-STK G1/8-AG M5-IG MS-V	-	G1/8"-M	M5-F	4	6.5	10.0	14
RED-STK G1/4-AG G1/8-IG MS-V	-	G1/4"-M	G1/8"-F	4	10.0	14.0	17
RED-STK G3/8-AG G1/8-IG MS-V	-	G3/8"-M	G1/8"-F	5	10.0	15.0	19
RED-STK G3/8-AG G1/4-IG MS-VN	-	G3/8"-M	G1/4"-F	5	8.5	15.0	19
RED-STK G1/2-AG G1/4-IG MS-V	-	G1/2"-M	G1/4"-F	6	12.0	18.0	24
RED-STK G1/2-AG G3/8-IG MS-V	-	G1/2"-M	G3/8"-F	6	12.0	18.0	24
RED-STK G3/4-AG G3/8-IG MS-V	-	G3/4"-M	G3/8"-F	7	14.0	21.0	32
RED-STK G3/4-AG G1/2-IG MS-V	-	G3/4"-M	G1/2"-F	7	14.0	21.0	32
RED-STK G1-AG G1/2-IG MS-V	-	G1"-M	G1/2"-F	8	16.0	24.0	41
RED-STK G1-AG G3/4-IG MS-V	-	G1"-M	G3/4"-F	8	16.1	24.1	41
DOP-NIP-S M5-AGx4	2.5	M5-M	-	4	4.5	-	8
DOP-NIP-S G1/8-AGx5	4.6	G1/8"-M	-	5	6.5	-	14
DOP-NIP-S G1/4-AGx5	7.6	G1/4"-M	-	5	10.0	-	17

Accessories for Screw Unions

Connection thread M5 to G1-1/2"

Type	dn [mm]	G1	G2	L [mm]	LG1 [mm]	LG2 [mm]	SW1 [mm]
DOP-NIP-S G3/8-AGx5	11.0	G3/8"-M	-	5	9.0	-	19
DOP-NIP-S G1/2-AGx6	12.0	G1/2"-M	-	6	12.0	-	24
DOP-NIP-S G3/4-AGx8	15.0	G3/4"-M	-	8	14.0	-	32
DOP-NIP-S G1-AGx10	20.0	G1"-M	-	10	16.0	-	41
RED-NIP G1/8-AG M5-AG MS V	2.5	G1/8"-M	M5-M	4	6.5	4.5	14
RED-NIP G1/4-AG G1/8-AG MS V	4.6	G1/4"-M	G1/8"-M	5	10.0	6.5	17
RED-NIP G1/2-AG G1/4-AG MS V	7.5	G1/2"-M	G1/4"-M	6	12.0	10.0	24
RED-NIP G1/2-AG G3/8-AG MS V	10.0	G1/2"-M	G3/8"-M	6	12.0	10.0	24
RED-NIP G3/4-AG G1/2-AG MS V	12.0	G3/4"-M	G1/2"-M	8	14.0	12.0	32
RED-NIP G1-AG G1/2- AG MS V	12.0	G1"-M	G1/2"-M	10	16.0	12.0	41
RED-NIP G1-AG G3/4- AG MS V	17.0	G1"-M	G3/4"-M	10	16.0	14.0	41

Type	dn [mm]	D [mm]	G1	L [mm]	L1 [mm]	LG1 [mm]	SW1 [mm]	Hose diameter (recom.) d [mm]
ST M3-AG 2 MS-V	1.2	2.4	M3-M	2.0	10.8	3.5	5	2
ST M5-AG 4 MS-V	2.2	4.4	M5-M	3.3	18.4	4.4	8	4
ST G1/8-AG 4 MS- ROH	2.5	3.9	G1/8"-M	4.0	28.0	7.0	14	4
ST G1/8-AG 6 MS-V	4.4	5.4	G1/8"-M	5.0	34.0	8.0	14	6
ST G1/8-AG 9 MS-V	4.0	8.3	G1/8"-M	5.0	34.0	8.0	14	9
ST G1/4-AG 6 MS-V	4.5	5.5	G1/4"-M	5.0	42.0	10.0	17	6
ST G1/4-AG 9 MS-V	7.5	8.5	G1/4"-M	5.0	42.0	10.0	17	9
ST G1/4-AG 13 MS- V	7.5	13.9	G1/4"-M	5.5	42.0	10.0	17	13
ST G3/8-AG 9 MS-V	7.4	8.5	G3/8"-M	6.0	43.0	10.0	19	9
ST G3/8-AG 13 MS- V	10.0	13.9	G3/8"-M	5.9	43.0	10.0	19	13
ST G1/2-AG 9 MS-V	7.5	8.6	G1/2"-M	6.1	45.0	11.9	24	9
ST G1/2-AG 13 MS- V	11.0	13.9	G1/2"-M	6.0	45.0	12.0	24	13
ST G1/2-AG 19 MS- V	14.3	19.0	G1/2"-M	10.0	58.0	12.0	24	19
ST G3/4-AG 13 MS- V	10.4	13.9	G3/4"-M	8.0	60.0	16.0	32	13
ST G3/4-AG 19 MS- V	16.0	19.0	G3/4"-M	7.8	60.0	15.8	32	19
ST G3/4-AG 25 MS- V	18.5	25.0	G3/4"-M	8.5	60.0	16.0	32	25
ST G1-AG 25 MS-V	22.0	25.0	G1"-M	10.1	62.0	15.8	36	25
ST G1-AG 32 MS-V	26.0	32.0	G1"-M	10.5	62.0	16.0	36	32
ST G1-1/4-AG 32 MS-V	27.9	32.0	G1-1/4"-M	10.3	62.0	15.9	46	32
ST G1-1/4-AG 38 MS-V	32.8	38.2	G1-1/4"-M	8.0	60.0	12.0	48	38
ST G1-1/2-AG 38 MS-V	29.9	38.0	G1-1/2"-M	12.2	64.0	15.5	50	38