

Screw in Push Fittings

Hose outer diameter from 4 mm to 14 mm



Screw in Push Fittings

Design

- Screw in push fitting, clamping clip and unlocking element made of nickel-plated brass
- Hose connection sealed with an NBR gasket
- Whitworth pipe thread

Suitability for Industry Specific Applications

Applications

- Screw in push fittings for quick connection of smooth hoses without the need for tools
- For use as a connecting element in vacuum systems
- Suitable for hoses with external tolerances in accordance with CETOP RP 54 P













Product highlights

- Safe, fast and tool free assembly and disassembly of all smooth hoses
- External clamping of the hoses prevents a reduction of the cross-section
- Tight, flow optimized design especially for vacuum applications
- Body and clamping clip made of nickel plated brass suitable and reusable for the toughest applications

Screw in Push Fittings

Hose outer diameter from 4 mm to 14 mm

Ordering Data Screw in Push Fittings

Type		Part no.
Plug union, straight	STV-GE M5-AG 4	10.08.02.00200 
Plug union, straight	STV-GE M5-AG 6	10.08.02.00201 
Plug union, straight	STV-GE G1/8-AG 4	10.08.02.00202 
Plug union, straight	STV-GE G1/8-AG 6	10.08.02.00204 
Plug union, straight	STV-GE G1/8-AG 8	10.08.02.00206 
Plug union, straight	STV-GE G1/4-AG 4	10.08.02.00203 
Plug union, straight	STV-GE G1/4-AG 6	10.08.02.00205 
Plug union, straight	STV-GE G1/4-AG 8	10.08.02.00207 
Plug union, straight	STV-GE G1/4-AG 10	10.08.02.00251
Plug union, straight	STV-GE G1/4-AG 12	10.08.02.00208 
Plug union, straight	STV-GE G3/8-AG 8	10.08.02.00237 
Plug union, straight	STV-GE G3/8-AG 10	10.08.02.00252
Plug union, straight	STV-GE G3/8-AG 12	10.08.02.00209 
Plug union, straight	STV-GE G3/8-AG 14	10.08.02.00211
Plug union, straight	STV-GE G1/2-AG 10	10.08.02.00253
Plug union, straight	STV-GE G1/2-AG 12	10.08.02.00210 
Plug union, straight	STV-GE G1/2-AG 14	10.08.02.00300
Plug union, straight	STVI-GE G1/8-IG 4	10.08.02.00149
Plug union, straight	STVI-GE G1/8-IG 6	10.08.02.00150
Plug union, straight	STVI-GE G1/8-IG 8	10.08.02.00151
Plug union, straight	STVI-GE G1/4-IG 4	10.08.02.00152
Plug union, straight	STVI-GE G1/4-IG 6	10.08.02.00153
Plug union, straight	STVI-GE G1/4-IG 8	10.08.02.00154
Plug union, straight	STVI-GE G1/4-IG 10	10.08.02.00260

Type		Part no.
Plug union, elbow	STV-W M5-AG 4	10.08.02.00155
Plug union, elbow	STV-W M5-AG 6	10.08.02.00235
Plug union, elbow	STV-W M5-AG 6	10.08.02.00296
Plug union, elbow	STV-W G1/8-AG 4	10.08.02.00156
Plug union, elbow	STV-W G1/8-AG 6	10.08.02.00288
Plug union, elbow	STV-W G1/8-AG 6	10.08.02.00158
Plug union, elbow	STV-W G1/8-AG 8	10.08.02.00160
Plug union, elbow	STV-W G1/4-AG 4	10.08.02.00157
Plug union, elbow	STV-W G1/4-AG 6	10.08.02.00159
Plug union, elbow	STV-W G1/4-AG 8	10.08.02.00161
Plug union, elbow	STV-W G1/4-AG 10	10.08.02.00254
Plug union, elbow	STV-W G1/4-AG 12	10.08.02.00162
Plug union, elbow	STV-W G3/8-AG 8	10.08.02.00236
Plug union, elbow	STV-W G3/8-AG 10	10.08.02.00255
Plug union, elbow	STV-W G3/8-AG 12	10.08.02.00163
Plug union, elbow	STV-W G1/2-AG 10	10.08.02.00256
Plug union, elbow	STV-W G1/2-AG 12	10.08.02.00164
Plug union, elbow	STV-WF M5-AG 4	10.08.02.00165
Plug union, elbow	STV-WF G1/8-AG 4	10.08.02.00166
Plug union, elbow	STV-WF G1/8-AG 6	10.08.02.00168
Plug union, elbow	STV-WF G1/8-AG 8	10.08.02.00170
Plug union, elbow	STV-WF G1/8-AG 10	10.08.02.00257
Plug union, elbow	STV-WF G1/4-AG 4	10.08.02.00167
Plug union, elbow	STV-WF G1/4-AG 6	10.08.02.00169
Plug union, elbow	STV-WF G1/4-AG 8	10.08.02.00171
Plug union, elbow	STV-WF G1/4-AG 10	10.08.02.00258
Plug union, elbow	STV-WF G3/8-AG 8	10.08.02.00234

Screw in Push Fittings

Hose outer diameter from 4 mm to 14 mm

Type		Part no.
Plug union, elbow	STV-WF G3/8-AG 10	10.08.02.00259

Type		Part no.
Plug union, T	STV-T M5-AG 4	10.09.02.00038
Plug union, T	STV-T G1/8-AG 4	10.09.02.00039
Plug union, T	STV-T G1/8-AG 6	10.09.02.00040
Plug union, T	STV-T G1/8-AG 8	10.09.02.00041
Plug union, T	STV-T G1/4-AG 6	10.09.02.00042
Plug union, T	STV-T G1/4-AG 8	10.09.02.00043
Plug union, T	STV-T G1/4-AG 10	10.09.02.00044
Plug union, T	STV-T G1/4-AG 12	10.09.02.00045
Plug connector, T	SVB-T 4	10.09.02.00020
Plug connector, T	SVB-T 6	10.09.02.00021
Plug connector, T	SVB-T 8	10.09.02.00022
Plug connector, T	SVB-T 10	10.09.02.00025
Plug connector, T	SVB-T 12	10.09.02.00023
Plug connector, T	SVB-T 14	10.09.02.00046

Type		Part no.
Sealing plug	VRS-STEC 4x14.9	10.08.06.00011
Sealing plug	VRS-STEC 6x14.4	10.08.06.00012
Sealing plug	VRS-STEC 8x18.5	10.08.06.00013
Sealing plug	VRS-STEC 10x18	10.08.06.00060
Sealing plug	VRS-STEC 12x16.5	10.08.06.00041

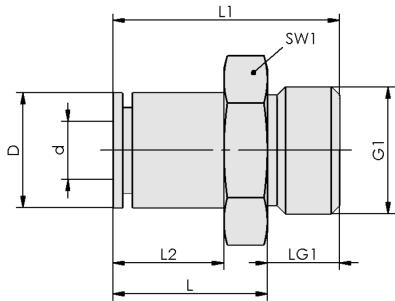
Technical Data Screw in Push Fittings

Pressure range (operating pressure) [bar]	Operating temperature [°C]
-0.95 ... 24.00 bar	-20 ... 120 °C

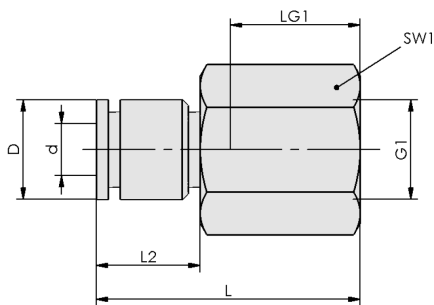
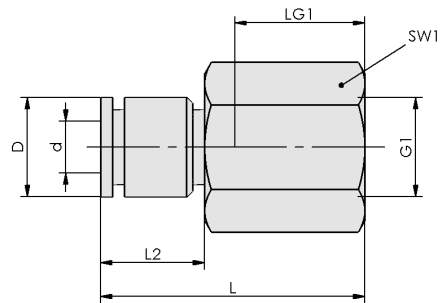
Screw in Push Fittings

Hose outer diameter from 4 mm to 14 mm

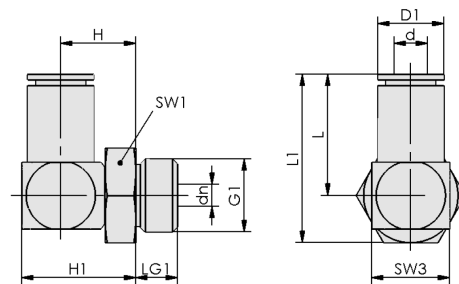
Design Data Screw in Push Fittings



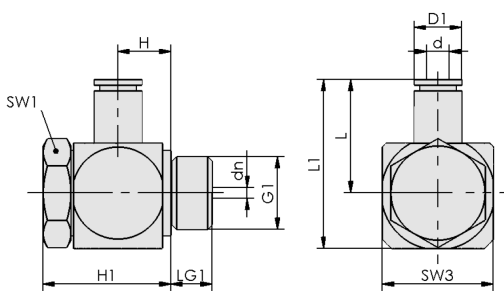
STV-GE



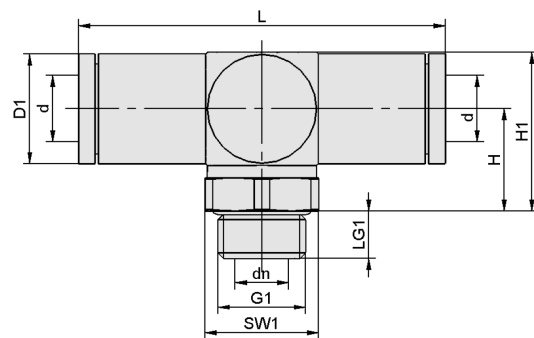
STVI-GE



STV-W



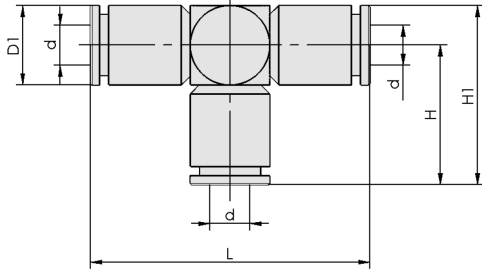
STV-WF



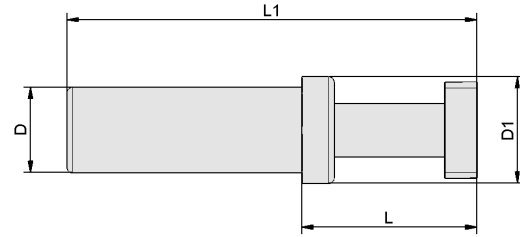
STV-T

Screw in Push Fittings

Hose outer diameter from 4 mm to 14 mm



SVB-T



VRS-TEC

Screw in Push Fittings

Hose outer diameter from 4 mm to 14 mm

Design Data Screw in Push Fittings

Type	d [mm]	D [mm]	G1	L [mm]	L1 [mm]	L2 [mm]	LG1 [mm]	SW1 [mm]
STV-GE M5-AG 4	4	7.9	M5-M	15.0	19.5	11.4	5	8
STV-GE M5-AG 6	6	9.9	M5-M	18.8	23.3	14.3	5	10
STV-GE G1/8-AG 4	4	7.9	G1/8"-M	13.7	19.2	9.5	6	13
STV-GE G1/8-AG 6	6	11.4	G1/8"-M	16.4	21.9	12.1	6	13
STV-GE G1/8-AG 8	8	14.0	G1/8"-M	20.7	26.2	16.4	6	14
STV-GE G1/4-AG 4	4	8.6	G1/4"-M	11.8	19.6	7.3	8	17
STV-GE G1/4-AG 6	6	11.2	G1/4"-M	15.2	23.0	10.7	8	17
STV-GE G1/4-AG 8	8	13.9	G1/4"-M	17.8	25.2	12.8	8	17
STV-GE G1/4-AG 10	10	16.5	G1/4"-M	23.4	30.8	18.4	8	17
STV-GE G1/4-AG 12	12	19.5	G1/4"-M	29.0	36.0	21.1	7	20
STV-GE G3/8-AG 8	8	14.6	G3/8"-M	17.4	25.0	11.8	8	20
STV-GE G3/8-AG 10	10	16.5	G3/8"-M	20.1	27.6	14.6	8	20
STV-GE G3/8-AG 12	12	19.5	G3/8"-M	23.6	31.0	17.6	8	20
STV-GE G3/8-AG 14	14	21.5	G3/8"-M	30.5	37.8	22.1	8	22
STV-GE G1/2-AG 10	10	16.5	G1/2"-M	18.5	28.0	12.5	10	24
STV-GE G1/2-AG 12	12	19.5	G1/2"-M	24.0	33.5	18.0	10	24
STV-GE G1/2-AG 14	14	21.5	G1/2"-M	25.0	34.5	19.0	10	24
STVI-GE G1/8-IG 4	4	8.5	G1/8"-F	23.5	-	9.5	8	14
STVI-GE G1/8-IG 6	6	11.5	G1/8"-F	26.5	-	12.0	8	14
STVI-GE G1/8-IG 8	8	14.5	G1/8"-F	29.5	-	15.0	8	14
STVI-GE G1/4-IG 4	4	8.5	G1/4"-F	30.5	-	9.5	12	17
STVI-GE G1/4-IG 6	6	11.5	G1/4"-F	30.5	-	12.0	12	17
STVI-GE G1/4-IG 8	8	14.5	G1/4"-F	33.5	-	15.0	12	17
STVI-GE G1/4-IG 10	10	16.5	G1/4"-F	37.0	-	17.5	12	17

Type	d [mm]	dn [mm]	D1 [mm]	G1	H [mm]	H1 [mm]	L [mm]	L1 [mm]	LG1 [mm]	SW1 [mm]	SW3 [mm]
STV-W M5-AG 4	4	2.5	8.5	M5-M	8.7	13.6	16.4	21.4	4.7	8	10
STV-W M5-AG 6	6	2.5	9.9	M5-M	8.7	13.6	19.7	24.7	4.7	8	10
STV-W M5-AG 6	6	4.0	11.5	M5-M	13.0	16.5	20.8	25.5	4.0	8	8
STV-W G1/8-AG 4	4	3.0	8.5	G1/8"-M	10.7	15.7	16.4	27.1	5.7	13	10
STV-W G1/8-AG 6	6	4.0	11.5	G1/8"-M	12.5	16.5	20.8	27.5	6.0	13	8
STV-W G1/8-AG 6	6	4.1	11.3	G1/8"-M	12.8	19.9	20.1	27.1	5.7	13	14
STV-W G1/8-AG 8	8	5.5	14.6	G1/8"-M	13.7	21.8	24.0	32.0	5.7	13	16
STV-W G1/4-AG 4	4	3.0	8.5	G1/4"-M	11.5	16.8	16.4	25.5	7.5	17	10
STV-W G1/4-AG 6	6	4.1	11.3	G1/4"-M	13.5	20.4	20.2	29.4	7.5	17	14
STV-W G1/4-AG 8	8	6.5	14.6	G1/4"-M	14.8	22.7	24.0	33.2	7.5	17	16
STV-W G1/4-AG 10	10	8.0	16.6	G1/4"-M	15.5	24.5	27.2	36.3	7.5	17	18
STV-W G1/4-AG 12	12	8.5	19.8	G1/4"-M	17.0	27.0	34.5	44.5	7.5	17	20
STV-W G3/8-AG 8	8	6.5	14.3	G3/8"-M	16.0	23.9	23.7	34.6	7.5	20	16
STV-W G3/8-AG 10	10	8.0	16.5	G3/8"-M	17.0	26.0	35.1	46.0	7.5	20	18

Screw in Push Fittings

Hose outer diameter from 4 mm to 14 mm

Type	d [mm]	dn [mm]	D1 [mm]	G1	H [mm]	H1 [mm]	L [mm]	L1 [mm]	LG1 [mm]	SW1 [mm]	SW3 [mm]
STV-W G3/8-AG 12	12	9.0	19.8	G3/8"-M	18.0	27.9	34.1	45.0	7.5	20	20
STV-W G1/2-AG 10	10	8.0	16.6	G1/2"-M	17.6	26.5	27.0	40.0	9.5	24	18
STV-W G1/2-AG 12	12	9.0	19.8	G1/2"-M	18.5	28.5	34.3	47.3	9.5	24	20
STV-WF M5-AG 4	4	2.5	8.6	M5-M	8.4	16.6	16.5	20.1	3.5	8	9
STV-WF G1/8-AG 4	4	5.4	8.6	G1/8"-M	9.8	23.6	17.4	25.3	5.0	14	16
STV-WF G1/8-AG 6	6	5.4	11.4	G1/8"-M	9.8	23.6	21.4	25.3	5.0	14	16
STV-WF G1/8-AG 8	8	5.4	14.3	G1/8"-M	9.8	23.6	23.4	31.3	5.0	14	16
STV-WF G1/8-AG 10	10	10.0	16.7	G1/8"-M	9.8	23.6	25.2	33.6	5.0	14	17
STV-WF G1/4-AG 4	4	7.2	8.5	G1/4"-M	9.8	23.9	19.5	29.4	6.7	17	20
STV-WF G1/4-AG 6	6	7.2	11.8	G1/4"-M	9.8	23.9	22.9	32.9	6.7	17	20
STV-WF G1/4-AG 8	8	7.2	14.5	G1/4"-M	9.8	23.9	25.6	35.5	6.7	17	20
STV-WF G1/4-AG 10	10	7.2	16.6	G1/4"-M	10.0	23.9	27.8	37.7	6.7	17	20
STV-WF G3/8-AG 8	8	9.4	14.3	G3/8"-M	10.0	24.9	26.7	37.6	6.7	22	22
STV-WF G3/8-AG 10	10	9.4	16.7	G3/8"-M	10.0	24.9	29.2	40.1	6.7	22	22

Type	d [mm]	dn [mm]	D1 [mm]	G1	H [mm]	H1 [mm]	L [mm]	LG1 [mm]	SW1 [mm]
STV-T M5-AG 4	4	2.0	8.7	M5-M	10	14.0	34.0	4.5	8
STV-T G1/8-AG 4	4	3.0	8.7	G1/8"-M	12	16.0	32.5	5.5	13
STV-T G1/8-AG 6	6	4.0	12.0	G1/8"-M	14	20.0	41.5	5.5	13
STV-T G1/8-AG 8	8	5.5	14.1	G1/8"-M	15	22.0	48.7	5.5	13
STV-T G1/4-AG 6	6	4.0	11.3	G1/4"-M	13	18.4	41.0	7.6	17
STV-T G1/4-AG 8	8	6.5	14.1	G1/4"-M	17	23.2	48.5	7.6	17
STV-T G1/4-AG 10	10	8.0	16.5	G1/4"-M	15	23.2	54.9	7.6	17
STV-T G1/4-AG 12	12	8.4	19.6	G1/4"-M	17	26.6	69.0	7.6	17
SVB-T 4	4	-	8.6	-	17	20.6	34.0	-	-
SVB-T 6	6	-	11.9	-	21	27.0	42.0	-	-
SVB-T 8	8	-	14.4	-	25	31.9	49.0	-	-
SVB-T 10	10	-	16.7	-	28	36.0	55.5	-	-
SVB-T 12	12	-	19.9	-	34	44.0	69.0	-	-
SVB-T 14	14	-	21.3	-	36	46.5	72.0	-	-

Type	D [mm]	D1 [mm]	L [mm]	L1 [mm]
VRS-STECC 4x14.9	4	6	15	35
VRS-STECC 6x14.4	6	8	15	35
VRS-STECC 8x18.5	8	8	19	39
VRS-STECC 10x18	10	10	18	42
VRS-STECC 12x16.5	12	14	17	44