

Vacuum / Compressed Air Distributors VTR

Number of threads from 5 to 9



Suitability for Industry Specific Applications



Applications

- Distribution of vacuum in systems with a central vacuum generator and several suction cups
- Distribution of compressed air in systems with several distributed vacuum generators

Vacuum / Compressed Air Distributors VTR

Design

- Distributor made of high strength aluminum with mounting holes

Product Highlights

- Optimized flow restrictor due to large dimensioned cross sections and coordinated inlets and outlets
- Two sizes to optimize evacuation time and flow resistance
- Suitable solution for a complete installation thanks to coordinated sizes

Designation Code Vacuum / Compressed Air Distributors VTR

VTR	-	G1/4-IG	-	5x	-	G1/8-IG
1		2		3		4

1 - Abbreviated designation

Code	Version
VTR	VTR

2 - Connection 1

Code	Connection
G1/4-IG	G1/4-IG (IG = female (F))
G3/8-IG	G3/8-IG

3 - Number of threads

Code	Number
5x...9x	5x and 9x

4 - Connection 2

Code	Connection
G1/8-IG	G1/8-IG (IG = female (F))
G1/4-IG	G1/4-IG

Vacuum / compressed air distributor VTR is delivered as a ready-to-connect product.

Ordering Data Vacuum / Compressed Air Distributors VTR

Type	Part no.
VTR G1/4-IG 5xG1/8	10.09.03.00058
VTR G3/8-IG 5xG1/4	10.09.03.00060
VTR G1/4-IG 9xG1/8	10.09.03.00056
VTR G3/8-IG 9xG1/4	10.09.03.00054

Vacuum / Compressed Air Distributors VTR

Number of threads from 5 to 9

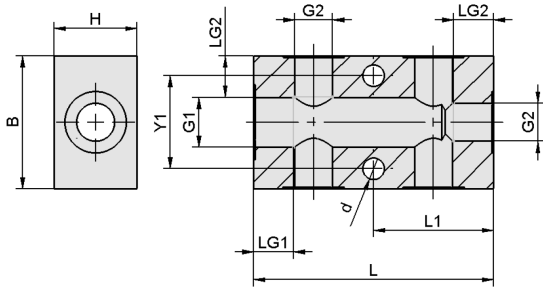
Technical Data Vacuum / Compressed Air Distributors VTR

Type	Distribution type	Weight [g]
VTR G1/4-IG 5xG1/8	5 x thread G1/8"-F	90
VTR G3/8-IG 5xG1/4	5 x thread G1/4"-F	110
VTR G1/4-IG 9xG1/8	9 x thread G1/8"-F	120
VTR G3/8-IG 9xG1/4	9 x thread G1/4"-F	240

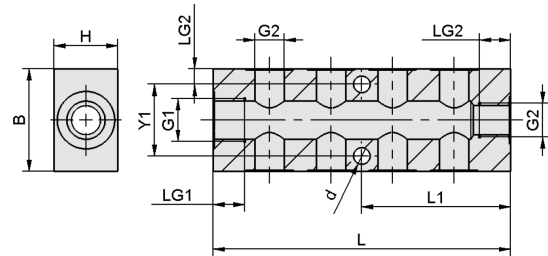
Vacuum / Compressed Air Distributors VTR

Number of threads from 5 to 9

Design Data Vacuum / Compressed Air Distributors VTR



VTR 5



VTR 9

Vacuum / Compressed Air Distributors VTR

Number of threads from 5 to 9

Design Data Vacuum / Compressed Air Distributors VTR

Type	B [mm]	d [mm]	G1	G2	H [mm]	L [mm]	L1 [mm]	LG1 [mm]	LG2 [mm]	Y1 [mm]
VTR G1/4-IG 5xG1/8	35	6.5	G1/4"-F	G1/8"-F	20	60	30	10	9	22
VTR G3/8-IG 5xG1/4	40	6.5	G3/8"-F	G1/4"-F	25	72	36	13	11	27
VTR G1/4-IG 9xG1/8	35	6.5	G1/4"-F	G1/8"-F	20	90	45	13	9	22
VTR G3/8-IG 9xG1/4	40	6.5	G3/8"-F	G1/4"-F	25	116	58	13	11	27