

# Three-Way Ball Valves KVD

Nominal diameter from 6 mm to 25 mm



## Suitability for Industry Specific Applications



### Applications

- Three-way ball valve for manual connection and disconnection of vacuum and compressed air circuits
- Activation and venting of individual suction cups
- For use in vacuum spiders and handling devices
- May be installed in any orientation

Three-Way Ball Valves KVD

### Design

- Ball valve made of brass (body and ball)
- Teflon gaskets
- Aluminum handle
- 3/2-way valve

### Product Highlights

- Leakage-free valves for vacuum and compressed air applications
- Wide range of nominal sizes allows optimum adaptation to the nominal flow
- Stable, wear-free brass design
- Ventilation for quick release of parts possible

### Designation Code Three-Way Ball Valves KVD

KVD	-	6	-	3/2
1		2		3

1 – Abbreviated designation

Code	Version
KVD	KVD

2 – Nozzle size

Code	Nozzle size in mm
6...25	6 to 25

3 – Variant

Code	Type
3/2	3/2-way valve

Three-way ball valve KVD is delivered as a ready-to-connect product.

### Ordering Data Three-Way Ball Valves KVD

Type	Part no.
KVD 6 3/2	10.05.08.00001
KVD 10 3/2	10.05.08.00002
KVD 15 3/2	10.05.08.00003
KVD 20 3/2	10.05.08.00004
KVD 25 3/2	10.05.08.00005

## Three-Way Ball Valves KVD

Nominal diameter from 6 mm to 25 mm

### Technical Data Three-Way Ball Valves KVD

Type	Nominal size [mm]	Nominal flow rate [m <sup>3</sup> /h]*	Nominal flow rate [l/min]	Pressure range (operating pressure) [bar]	Weight [kg]
KVD 6 3/2	6	5	84	-0.95 ... 16.00 bar	0.081
KVD 10 3/2	10	15	250	-0.95 ... 16.00 bar	0.810
KVD 15 3/2	15	22	367	-0.95 ... 16.00 bar	0.810
KVD 20 3/2	20	45	750	-0.95 ... 16.00 bar	1.260
KVD 25 3/2	25	55	917	-0.95 ... 16.00 bar	1.930

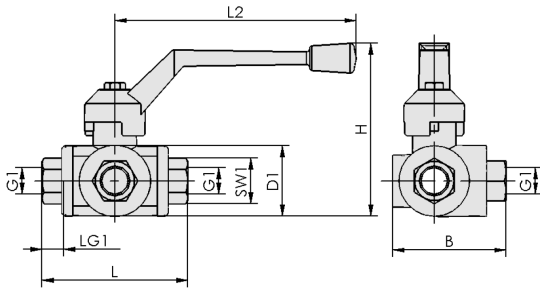
\*In the case of a pressure drop of 50 mbar

## Three-Way Ball Valves KVD

Nominal diameter from 6 mm to 25 mm

### Design Data Three-Way Ball Valves KVD

---



---

KVD

## Three-Way Ball Valves KVD

Nominal diameter from 6 mm to 25 mm

### Design Data Three-Way Ball Valves KVD

Type	B [mm]	D1 [mm]	G1	H [mm]	L [mm]	L2 [mm]	LG1 [mm]	SW1 [mm]
KVD 6 3/2	58	39	G1/4"-F	85	77	125	19	22
KVD 15 3/2	58	39	G1/2"-F	85	77	125	19	29
KVD 10 3/2	58	39	G3/8"-F	85	77	125	19	22
KVD 25 3/2	80	55	G1"-F	124	104	170	25	41
KVD 20 3/2	70	47	G3/4"-F	107	92	145	23	34